



PASSENGER ELEVATOR
BED ELEVATOR
FREIGHT/CARGO ELEVATOR
OBSERVATION ELEVATOR
HOME ELEVATOR
CAR ELEVATOR
ESCALATOR
MOVING WALK

SIGMA ELEVATOR SHANGHAI CO.LTD

ADDRESS: NO.399, YOUDONG ROAD, WUJIANG AREA, SUZHOU CITY, CHINA

EMAIL: sigmashanghailift@gmail.com

TEL NO. +86 18917616151

SIOMA
SHANGHAI SINCE 2005

UNDERTAKE HISTORY AND FUTURE

Originating from Shanghai since 1989, it inherits the history and connects the future

Born at the right time, it has been developing vigorously

Inheriting the ingenuity connotation and craftsman spirit of Shanghai industry

Diversity, tolerance, excellence

With 30 years of endeavor, we grow up little by little

With 30 years pursuit of perfection, we make extraordinary achievement



CONTENTS

01/ About Us

03/ Ingenuity Quality Leading

05/ Technology

09/ Passenger Elevator

09-10 Small Machine Room Passenger Elevator

13-14 Machine Roomless Passenger Elevator

19-28 Passenger Elevator Car Decoration

29/ Observation Elevator

37/ Bed Elevator

41/ Home Elevator

51/ Car Decoration

67/ Freight Elevator

67-68 Freight Elevator

69-70 Machine Roomless Freight Elevator

71-72 Automobile Elevator

75-76 Freight and Automobile Elevator Car Decoration

77-78 Dumbwaiter

79/Function Table

83/Escalator/Moving Walk

83 Escalator

84 Moving Walk

95/Sales Network

97/Reference Projects

103/After Sales Service



About Us

Founded in the year of 1989, SHANGHAI SIGMA ELEVATOR is a modern professional elevator enterprise integrating design, manufacturing, sales and maintenance. The company owns the double A qualification of elevator manufacturing, installation, modification and maintenance with its business scope of passenger elevator, hospital elevator, sightseeing elevator, residential elevator, freight elevator, escalator, automatic sidewalk, etc. Relying on its 30-year elevator manufacturing experience, its rich product varieties can meet the customers' diversified demands and its business scope is involved various provinces and cities throughout the country. Its products are even exported to the Southeast Asia, the Middle East, Africa, etc. Furthermore, it has set up long term cooperation with many enterprises.

Dedicated to elevator service for 30 years, SHANGHAI SIGMA ELEVATOR applies the concept of intelligent manufacturing in China, information management and Internet of things to production, management and service while inheriting the spirit of Shanghai spirit as the supplier of Shanghai Expo in 2010, thus achieving information and intelligent manufacturing industrial chain and striving to know customers' demand. With service networks are all over the country, it provides overall and excellent architecture traffic service for customers and users.

Corporate Concept

In pursuit of physical and spiritual happiness of all employees, SIGMA ELEVATOR provides high quality products and services for customers, thus enhancing the corporate value and making contributions to social progress.

Ingenuity Quality Leading

SIGMA ELEVATOR actively introduces the advanced manufacturing equipment and provides guarantee for its excellent product quality with fine processing technology and strong design manufacturing capacity.

Powerful and well-designed manufacturing equipment,
Provides the central drive to production



Six Major Component, 5-Year Quality Assurance

6 SIX PARTS
5 FIVE YEAR WARRANTY

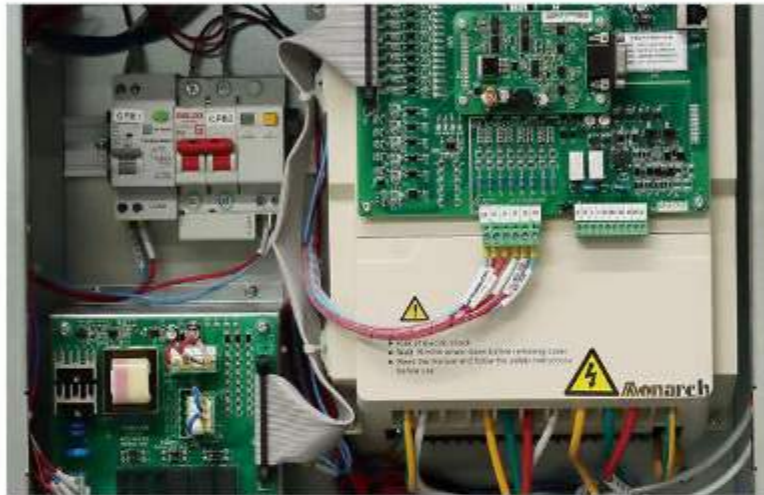
SIGMA ELEVATOR provides 5-year quality assurance for the six major components, including tractor, frequency converter, crane, overspeed limit device, safety gear and buffer, far beyond the warranty period in the elevator industry current, thus providing more secure, more reliable, more durable and more stable elevator riding experience for customers.



1

Main Engine

Permanent magnet synchro-nous main engine, in strong power, Extraordinary output and energy-saving performance



2

Frequency Converter

Use the industry creative 4-quadrant frequency converter, It can effectively reduce the machine room temperature while saving energy.



3

Crane

The crane needs no position switch and achieve the position control through encoder, High efficiency and low fault rate

4

Overspeed Limit Device

Monitor and control the car speed at any time, Send signal to safety gear in time



5

Safety Gear

In case of overspeed or emergency The car ceases immediatel Effectively protect the secure operation of the elevator



6

Buffer

Last link of elevator security system, Effective absorption and energy consumption Impact energy of elevator fall

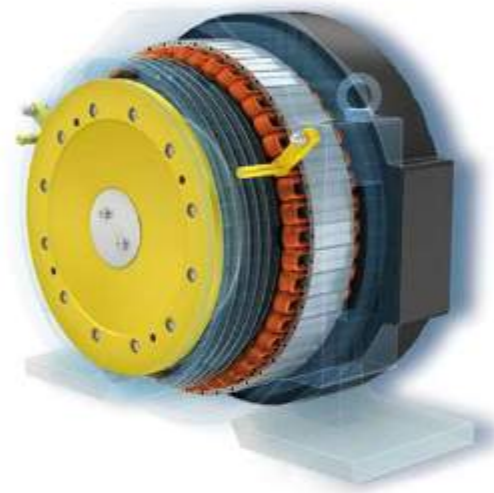


Core Technology Strict Technology

SIGMA ELEVATOR, integrate with the world leading elevator technology into R&D and manufacturing, injects flexible and high efficient operation power to elevator, thus enabling it to run in different operation environment and undertaking the heavy task of passenger transport.

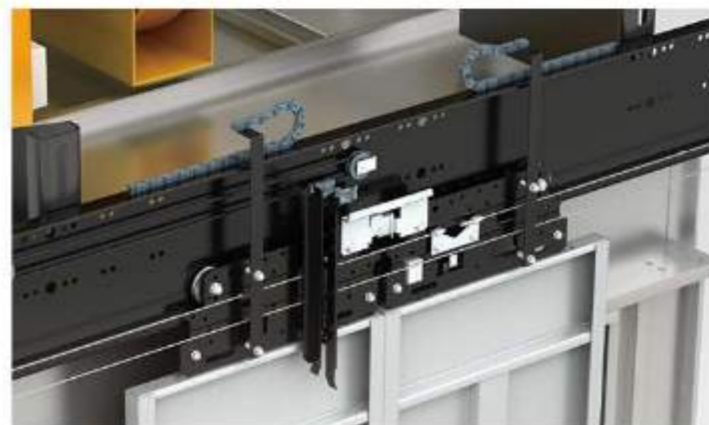
Permanent Magnet Synchronous Gearless Tractor

SIGMA ELEVATOR, integrated with coaxial transmission technology, digital frequency inversion technology, group computer combination control technology. is made up of rare earth material with high efficiency energy conservation, small operation cost, low heat loss, and high work efficiency. Compared with traditional technology, it can save over 40% energy. It does not need oil replacement and has no oil pollution. With low noise design, it can create quiet elevator riding space.



Integrated Control System

With the combination of permanent magnet synchronous drive technology and integrated computer-controlled intelligent control system, SIGMA ELEVATOR can meet the demands of elevator riding in business building, hotel and high-rise apartment with its high efficiency, energy conserva-tion, space conserva-tion, security, comfort, stable performance, etc and create new elevator space with its humanized design concept.



Vvfv Frequency Conversion Door System

It applies the VVVF frequency and voltage conversion control technology to the elevator door system, which ensures the smooth and quiet opening and closing of the elevator door and improve the elevator door switch flexibility. The appropriate switch speed of each floor is adjusted in order to ensure the security and reliability. The gate load detector of self-learning ability can further improve the flexibility of the elevator gate switch, which can monitor the elevator gate load changes of each floor. The elevator door will automatically re-open with unusual resistance.

Infrared Light Curtain Protection

120 sensitive and dense infrared light curtains form alight curtain protection safety net at the gate way of the elevator and respond to the people and things around its detection range, which greatly improves the security performance.



Ucmp Protection System

UCMP protection system will immediately start in case of any accidental movement when the elevator is in the leveling position in door opening status. The elevator ceases immedi-ately in order to prevent the accident



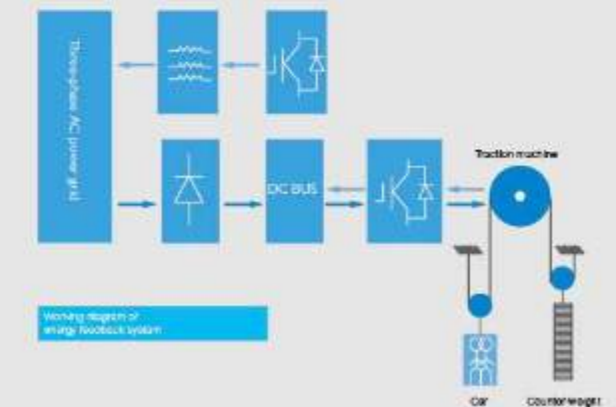
Led Green Light Source Lighting System

The car lighting accounts for about 40% of the total elevator power consumption. The power consumption of LED lighting system is only 1/2 of the ordinary fluorescent lamp and 1/8 of the ordinary filament lamp with no radiation pollution, fast startup and long life service.



Energy Feedback Device (Optional)

The energies in no load lifting and full load descending of the elevator are collected and fed back to other equipment, which can save the energy of about 60%.



Small Machine Room Passenger Elevator

SIGMA ELEVATOR small machine room passenger elevator shortens the machine room space and creates free and comfortable elevator riding space through optimization design and reasonable layout.

New Main Engine

It uses the permanent magnet synchronous gearless main engine with compact structure, large space for machine room and easy installation.

Flexible Civil Engineering

Compared with the traditional machine room elevator, the machine room is only the extension of the hoist way, which can save about 50% machine room space with more convenient and flexible civil engineering.

Cost Saving

The machine room is an extension of the hoist way, which can effectively reduce the building materials and construction cost.



Machine Roomless Passenger Elevator

SIGMA ELEVATOR breaks through the limit of traditional elevator with machine room setting. The machine room is a part of the hoist way, which can not only save the building space but also make the building design more flexible and free.

Energy Conservation and Consumption Reduction

It uses permanent magnet synchronous gearless main engine. Being convenient and small, it has high transmission efficiency and saves 25% electric energy compared with traditional main engine.

Space Conservation

Elevator main engine and control cabinet are directly installed in the hoist way, thus saving 10% architecture space.

Wide Application

Being small and flexible, it is applied to different types of architectures.



Elevator Car (Standard)



SGM-K101

Integrated ceiling:
mirror stainless steel + acrylic +
downlights
Rear wall:
hairline stainless steel +
mirror etching stainless steel
Side wall:
hairline stainless steel +
mirror stainless steel
Front wall:
hairline stainless steel
Handrail:
hairline stainless steel round
Floor: PVC



360° panoramic show



SGM-K102

Ceiling:
Stainless steel mirror surface match
with white transparent plate
Front wall:
Hairline stainless steel
Side wall:
Hairline stainless steel+
mirror etched stainless steel
Rear wall:
Hairline stainless steel+
mirror etched stainless steel
Car door:
Hairline stainless steel
Floor: PVC



360° panoramic show

Elevator Car (Optional)



SGM-K103

Ceiling: mirror stainless steel frame, colored acrylic, led spotlight
 Rear wall: hairline stainless steel, mirror stainless steel etching
 Side wall: hairline stainless steel, mirror stainless steel
 Front wall: hairline stainless steel
 Handrail: stainless steel, wood
 Floor: marble parquet



360° panoramic show



SGM-K104

Ceiling: Mirror stainless steel frame with acrylic craft board+ LED Spotlight
 Cabin: Mirror etching stainless steel
 Floor: PVC



360° panoramic show

The pictures are plotted by computer and are likely somewhat different from the actual products.



SGM-K105

Ceiling: painted steel frame+acrylic
 Side wall: Titanium black mirror finished etched stainless steel+hairline stainless steel
 Rear wall: Titanium black mirror finished etched stainless steel+hairline stainless steel
 Floor: PVC



360° panoramic show



SGM-K106

Ceiling: Mirror stainless steel+Acrylic
 Car rear wall: hairline stainless steel + mirror etching stainless steel
 Car side wall: hairline stainless steel + mirror etching stainless steel
 Car front wall: hairline stainless steel
 Handrail: hairline stainless steel round
 Floor: PVC



360° panoramic show

The pictures are plotted by computer and are likely somewhat different from the actual products.

Elevator Car (Optional)



SGM-K107

Ceiling: Mirror stainless steel frame, Acrylic plate, LED lighting.
 Side Wall: Middle: mirror etching stainless steel panel,
 Two side: hairline stainless steel
 Rear Wall: Middle: mirror etching stainless steel panel,
 Two side: hairline stainless steel
 Cabin Door: Hairline stainless steel
 Floor: PVC



360° panoramic show



SGM-K108

Ceiling: mirror stainless steel+LED panel light+LED down lamp
 Rear wall: middle mirror etched stainless steel +
 side hairline stainless steel
 Side wall: middle mirror stainless steel +
 side hairline stainless steel
 Front wall: hairline stainless steel
 Handrail: hairline stainless steel round handrail
 Floor: PVC



360° panoramic show

The pictures are plotted by computer and are likely somewhat different from the actual products.



SGM-K109

Integrated ceiling: Mirror stainless steel + acrylic +
 downlights
 Rear wall: Hairline stainless steel + mirror etching stainless
 steel
 Side wall: Hairline stainless steel + mirror stainless steel
 Front wall: Hairline stainless steel
 Handrail: Hairline stainless steel round
 Floor: PVC



360° panoramic show



SGM-K110

Ceiling: Mirror stainless steel frame with acrylic craft board
 Cabin: Hairline stainless steel, Mirror etching stainless steel
 Handrail: Hairline stainless steel flat handrail
 Floor: PVC



360° panoramic show

The pictures are plotted by computer and are likely somewhat different from the actual products.

Elevator Car (Optional)



SGM-K111

Ceiling: Titanium Mirror stainless steel
 Car Wall: Titanium ST. ST. + Titanium Mirror ST.ST.
 Handrail: Titanium three pipes handrail
 Floor: PVC



360° panoramic show



SGM-K112

Ceiling: titanium gold mirror stainless steel + acrylic + LED downlights
 Car rear wall: titanium gold stainless steel + titanium gold mirror etching stainless steel
 Car side wall: titanium gold stainless steel + titanium gold mirror stainless steel
 Car front wall: titanium gold stainless steel
 Car door: Hairline stainless steel
 Handrail: titanium gold stainless steel round tube
 Floor: Marble



360° panoramic show

The pictures are plotted by computer and are likely somewhat different from the actual products.



SGM-K113

Ceiling: Titanium stainless steel + acrylic + Spotlight
 Car walls: Titanium stainless steel + Intermediate wall mirror stainless steel
 Handrail: Mirror stainless steel single tube (optional)
 Floor: Super wear-resistant parquet PVC flooring (standard)
 Marble parquet flooring (optional)



360° panoramic show



SGM-K114

Ceiling: titanium gold mirror stainless steel + acrylic
 Car rear wall: titanium gold etching stainless steel + titanium gold mirror etching stainless steel
 Car side wall: titanium gold etching stainless steel + titanium gold mirror etching stainless steel
 Car front wall: titanium gold stainless steel
 Handrail: titanium gold stainless steel + wood
 Floor: PVC



360° panoramic show

The pictures are plotted by computer and are likely somewhat different from the actual products.

Elevator Car (Optional)



SGM-K115

Ceiling: Mirror stainless steel with acrylic craft board+ LED Spotlight
 Car Wall: Wood, Mirror stainless steel
 Handrail: Gold mirror stainless steel
 Floor: PVC



360° panoramic show



SGM-K116

Ceiling: Stainless steel fram+ acrylic + downlights
 Car Wall: Mirror ST. ST. + Wood
 Handrail: Wood+Stainless steel
 Floor: PVC



360° panoramic show

The pictures are plotted by computer and are likely somewhat different from the actual products.



SGM-K117

Ceiling: Titanium gold hairline stainless steel + Light strip + LED Spotlight
 Car Wall: Titanium gold hairline stainless steel + middle left and right side of the car wall mirror stainless steel + Intermediate wall mirror stainless steel + Light strip
 Handrail: Titanium gold three pipes handrail (optional)
 Floor: Super wear-resistant parquet PVC flooring (standard)
 Marble parquet flooring (optional)



360° panoramic show

SGM-K118

Ceiling: painted steel covered with golden foil+mirror finish stainless steel
 with rose golden border+rose golden hairline finished stainless steel+
 LED downlights+LED hidden light
 Car rear wall: rose golden mirror finish stainless steel+ rose golden mirror finish stainless steel border+glass mirror
 Car side wall: rose golden mirror finish stainless steel+ rose golden mirror finish stainless steel border+leather
 Car front wall: rose golden mirror finish stainless steel
 Handrail: rose golden mirror finish stainless steel+stone
 Floor: parquet stone



360° panoramic show

The pictures are plotted by computer and are likely somewhat different from the actual products.

Elevator Car (Optional)



SGM-K119

Ceiling: Rose-gold Mirror ST.ST. + Acrylic
 Rear Wall: Rose-gold Hairline ST. ST. + Rose-gold Mirror ST.ST.
 Side Wall: Rose-gold Hairline ST. ST. + Rose-gold Mirror ST.ST.
 Front Wall: Rose-gold Hairline ST. ST.
 Handrail: Rose Gold Round ST.ST. Tube
 Floor: PVC



360° panoramic show



SGM-K120

Ceiling: Bronze mirror stainless steel insert, LED lighting+gold paper, Concealed lamp belt
 Front wall: Afpanti-fingerprint bronze mist side stainless steel
 Side wall: Bronze mirror stainless steel, Afpanti-fingerprint bronze mist side, Shadow wood decorative
 Rear wall: Bronze mirror stainless steel, Middle bronze mirror etched stainless steel
 Floor: Standard PVC (Optional marble)



360° panoramic show



SGM-K121

Ceiling: Wood, mirror stainless steel
 Car Wall: Mirror stainless steel
 Handrail: black stainless steel
 Floor: PVC



360° panoramic show

SGM-K122

Ceiling: titanium gold mirror stainless steel + acrylic + downlights
 Car rear wall: titanium gold mirror etching stainless steel + titanium gold mirror stainless steel
 Car side wall: titanium gold mirror etching stainless steel + titanium gold mirror stainless steel
 Car front wall: titanium gold mirror stainless steel
 Handrail: titanium gold stainless steel + wood
 Floor: PVC



360° panoramic show



Hospital Elevator

In the hospital, modern medical treatment center, sanatorium, health center etc. where the doctors and nurses heal the wounded and rescue the dying, hospital elevator races with the time. hospital elevator series adheres to the persistently humane thinking. It applies fuzzy logic and group supervision tech of expert system. It fulfills intellectual elevator running. It shortens the patients' waiting time to the greatest extent.



Car Structure Optimized Design

SIGMA hospital elevator focuses on human-oriented design, Fully optimizes the car structure and meets customer needs furthest. Provide a quiet, comfortable and elegant space for passengers.

Time Delay Switch

After the elevator car door is fully opened, keeps it in the open state, after a delay time, it will be closed automatically, to ensure health care works, especially patients in and out freely, if there are special needs, the elevator can also extend closing time.

Different Sizes Of Figure Display

Larger and thicker figures are displayed for 4.0 myopia, designed for the elderly and poor vision people.

Elevator Emergency Device (Optional)

When the elevator is shut down for failure or the power is off, it can quickly switch to low speed to leveling position, and open the door to evacuate passengers when it is stable.

Hospital elevator Car decoration(Standard)



SGM-Y201

- Ceiling: Hairline stainless steel, acrylic board, LED energy saving light
- Car wall: Hairline stainless steel
- Car door: Hairline stainless steel
- Handrail: Hairline stainless steel flat handrail(Both sides)
- Lighting: LED down light
- Floor: PVC



360° panoramic show

The pictures are plotted by computer and are likely somewhat different from the actual products.

Sightseeing Elevator

The elegant appearance graced your building, multi-angle enjoy outside landscape, open the passenger's field of vision. Car outside lighting unitary in surrounding environment, so that the sightseeing elevator into a beautiful landscape. Sightseeing elevator to give the building character and vitality. Whether outdoors or indoors, sightseeing elevator can become a focus of attention, when seating, the passengers can easily enjoy the architectural styles and the surrounding landscape, its dynamic and colorful style, into a mobile landscape on building. Magnificent circular sightseeing elevator is a classic design, circular car and down firing lighting brought feeling of the future of the world. There are also angled, semi-circular, cut-based and other forms of sightseeing elevator, No matter match with what kind of the building, can reflect a unique style.

Sigma, A Model For Dignity

We strive to give the product super visual beauty to make it the most dazzling scenery of the whole building and make it brilliant and lustrous at nightfall, interoreting dignity.

Charming Sight

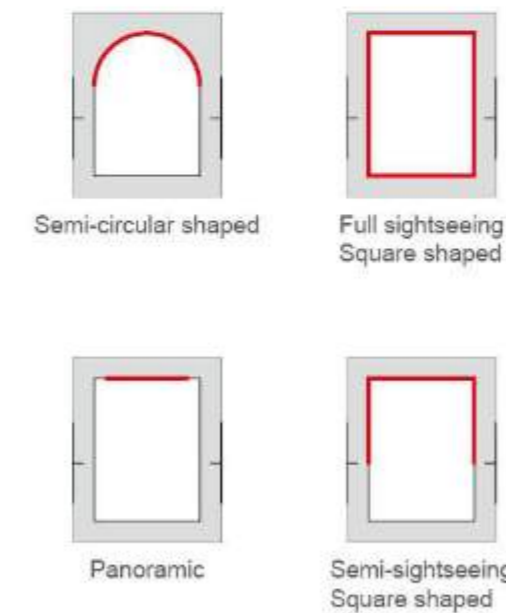
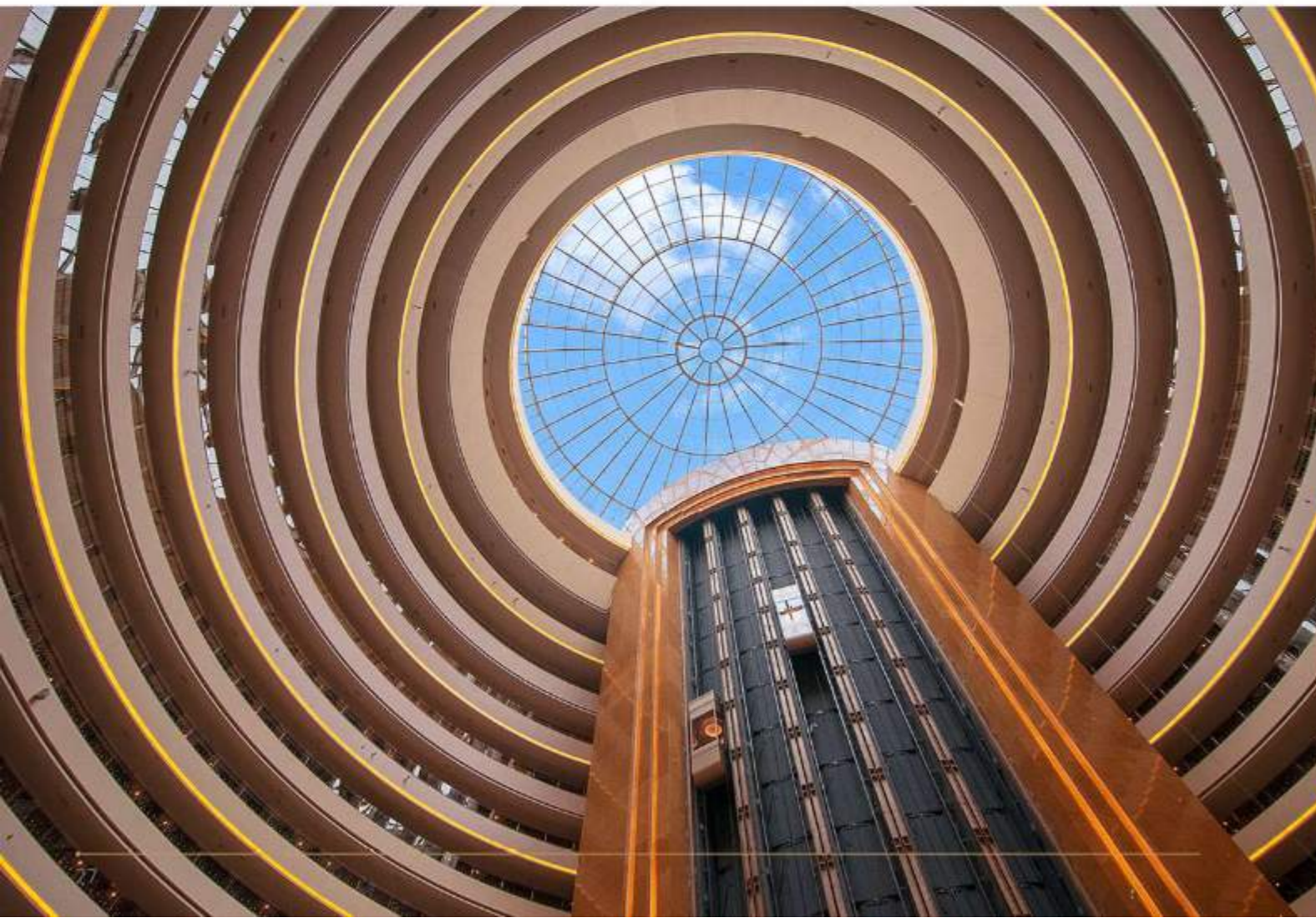
Feature rich decorative style of the building with the environment do not match.

Well-Designed, Comfortable and Safe

Digital tractor driving, flexible micro computer control and variable voltage and varidble frequency control are adopted. We make every detail for your special request and make all-round consideration to the product to share a safe sunshine platform with you.



There are a variety of car types for you to choose to meet your different needs



The Red line in the picture is transparent glass.



Elevator Car (Optional)



SGM-G301

Ceiling: Mirror stainless steel + Hairline stainless steel + downlights
 Front wall: Hairline stainless steel
 Side wall: Hairline stainless steel
 Rear wall: Safety laminated glass
 Handrail : Round brushed stainless steel tube
 Floor: PVC imitation marble



360° panoramic show



SGM-G302

Ceiling: Hairline stainless steel + acrylic lamp decoration + downlight
 Front wall: Hairline stainless steel+ laminated glass
 Side wall: Hairline stainless steel + laminated glass
 Rear wall: Safety laminated glass
 Handrail : Round brushed stainless steel tube
 Floor: PVC imitation marble



360° panoramic show



SGM-G303

Ceiling: Hairline stainless steel + mirror strips + downlight
 Front wall: Hairline stainless steel
 Side wall: Hairline stainless steel + safety laminated glass
 Rear wall: Safety laminated glass
 Handrail : Round brushed stainless steel tube
 Floor: PVC imitation marble



360° panoramic show

SGM-G304

Ceiling: titanium gold mirror stainless steel + acrylic + downlights
 Car rear wall: titanium gold mirror etching stainless steel + titanium gold mirror stainless steel
 Car side wall: titanium gold mirror etching stainless steel + titanium gold mirror stainless steel
 Car front wall: titanium gold mirror stainless steel
 Handrail: titanium gold stainless steel + wood
 Floor: PVC



360° panoramic show



Elevator Car (Optional)



SGM-G305

Ceiling: Hairline stainless steel + acrylic lamp decoration
 Front wall: Hairline stainless steel + safety laminated glass
 Side wall: Hairline stainless steel + safety laminated glass
 Rear wall: Safety laminated glass
 Handrail : Round brushed stainless steel tube
 Floor: PVC imitation marble



360° panoramic show

SGM-G306

Car cover: Add the steel spray lamp
 Panorama wall: Safety glass
 Decoration roof: In the mirror stainless steel base plate with aureate lamp, wall and its middle parts the vaulted white light lighting of through
 Car wall: Safe laminated glass
 Handrail: Stainless steel tube
 Floor: PVC floor



360° panoramic show



SGM-G307

Car cover: Paint steel, and lighting decoration
 Panorama wall: Laminated glass (3pcs)
 Ceiling: Paint steel and acrylic lighting decoation
 Car wall: Hairline finished St/St
 Handrail: Stainless steel tube
 Floor: PVC floor



360° panoramic show

SGM-G308

Ceiling: titanium gold mirror stainless steel + acrylic + downlights
 Car rear wall: titanium gold mirror etching stainless steel + titanium gold mirror stainless steel
 Car side wall: titanium gold mirror etching stainless steel + titanium gold mirror stainless steel
 Car front wall: titanium gold mirror stainless steel
 Handrail: titanium gold stainless steel + wood
 Floor: PVC



360° panoramic show



Decoration Series

Human-Machine Interface



The pictures are plotted by computer and are likely somewhat different from the actual products.



The pictures are plotted by computer and are likely somewhat different from the actual products.

Decoration Series

Human-Machine Interface



The pictures are plotted by computer and are likely somewhat different from the actual products.

Touch Screen Series



The pictures are plotted by computer and are likely somewhat different from the actual products.

Decoration Series

Landing Direction Indicator(Optional)



SGM-B101



SGM-B102



SGM-B103



SGM-B104



SGM-B105



SGM-B106

None Bottom Calls Box



SGM-L115
Optional



SGM-L116
Optional



SGM-L117
Optional



SGM-L118
Optional



SGM-L119
Optional



SGM-L120
Optional



SGM-L121
Optional



SGM-L122
Optional



SGM-L123
Optional

Elevator multimedia information system (standard)



SGM-X001
White dot matrix



SGM-X002
Segment lcd display



SGM-X003
Segment lcd display



SGM-X004
Segment lcd display



SGM-X005
Segment lcd display



SGM-X006
Segment lcd display



SGM-X007
Segment lcd display



SGM-X008
White dot matrix

7-10.1 inch Photos displays (optional)



SGM-X009
7" TFT display



SGM-X010
9.7" TFT display



SGM-X011
10.1" TFT display

8-12.1 inch video displays (optional)



SGM-X009
8" multimedia display



SGM-X010
10.4" multimedia display



SGM-X011
12.1" multimedia display

● On transom Hall Position Indicator

White dot



SGM-W-A202



SGM-W-A204

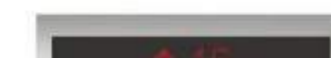
LCD



SGM-BL-A205

● On Wall Hall Position Indicator

Red dot



SGM-R-A207

LCD



SGM-BL-A209

Decoration Series

Landing Door (Optional)



SGM-TM101



SGM-TM102



SGM-TM103



SGM-TM104



SGM-TM105



SGM-TM106



SGM-TM107



SGM-TM108



SGM-TM109



SGM-TM110



SGM-TM111



SGM-TM112



SGM-TM113



SGM-TM114



SGM-TM115



SGM-TM116



SGM-TM117



SGM-TM118

The pictures are plotted by computer and are likely somewhat different from the actual products.

The pictures are plotted by computer and are likely somewhat different from the actual products.

Decoration Series

Landing Door (Optional)



SGM-TM119



SGM-TM120



SGM-TM121



SGM-TM128



SGM-TM129



SGM-TM130



SGM-TM122



SGM-TM123



SGM-TM124



SGM-TM131



SGM-TM132



SGM-TM133



SGM-TM125



SGM-TM126



SGM-TM127



SGM-TM134



SGM-TM135



SGM-TM136

The pictures are plotted by computer and are likely somewhat different from the actual products.

The pictures are plotted by computer and are likely somewhat different from the actual products.

Decoration Series

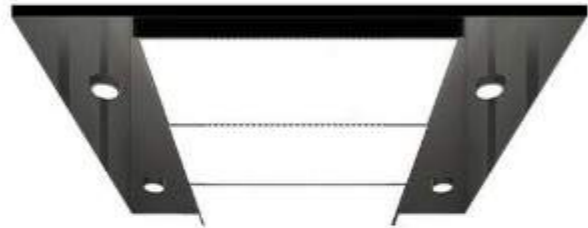
Ceiling (Optional)



SGM-DD101



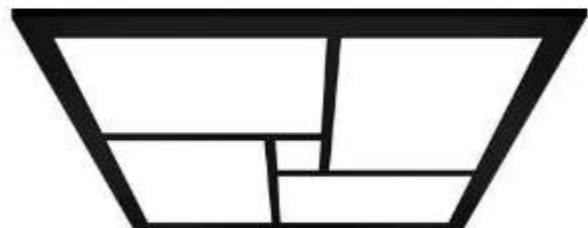
SGM-DD102



SGM-DD103



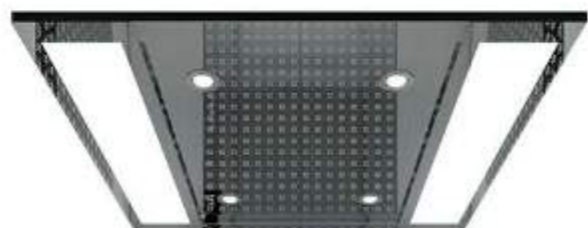
SGM-DD104



SGM-DD105



SGM-DD106



SGM-DD107



SGM-DD108



SGM-DD109



SGM-DD110



SGM-DD111



SGM-DD112



SGM-DD113



SGM-DD114



SGM-DD115



SGM-DD116



SGM-DD117



SGM-DD118



SGM-DD119



SGM-DD120



SGM-DD121



SGM-DD122

Decoration Series

Handrail (Optional)



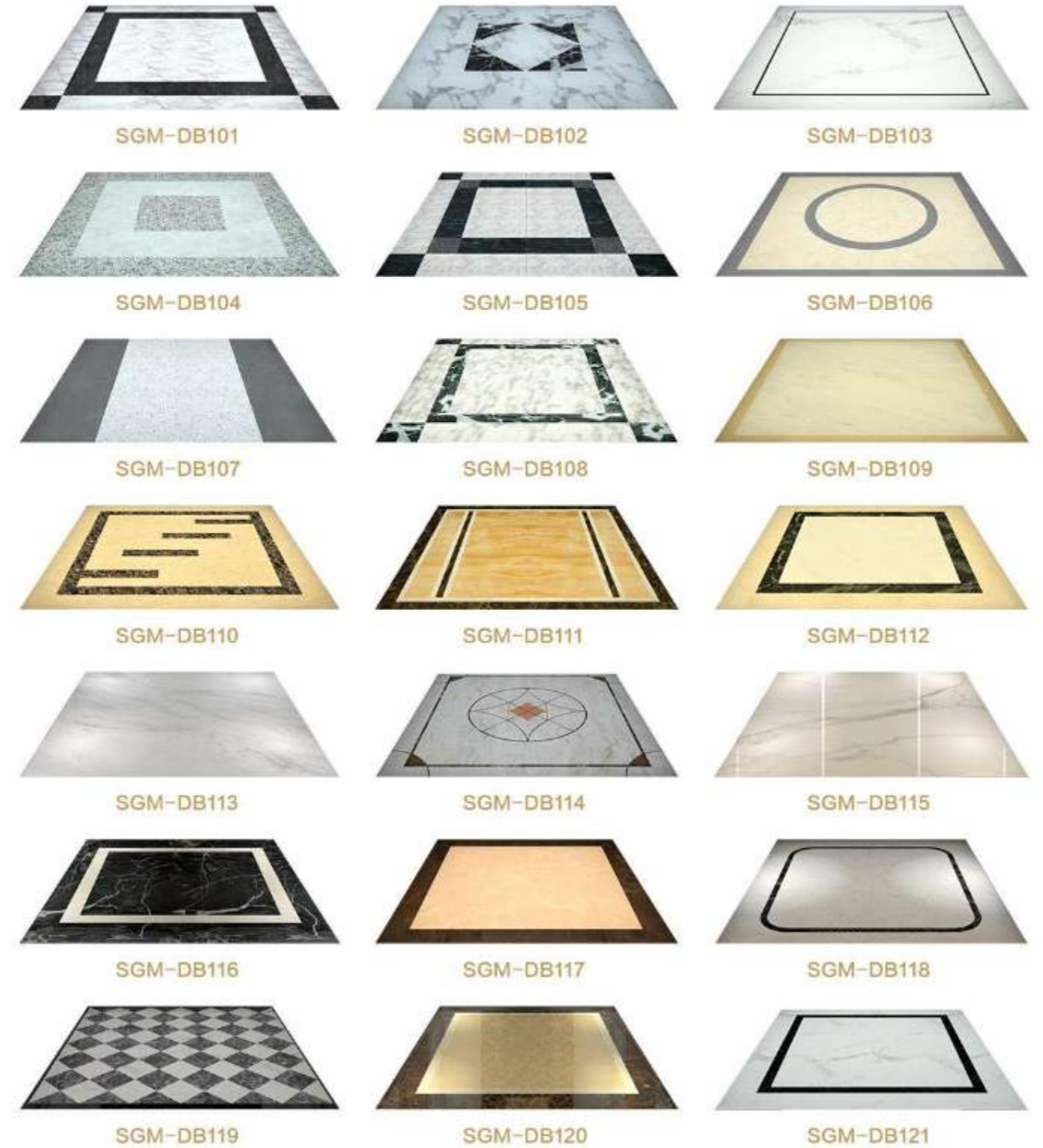
Color



The pictures are plotted by computer and are likely somewhat different from the actual products.

Decoration Series

Floor (Optional)



The pictures are plotted by computer and are likely somewhat different from the actual products.

Passenger Elevator Function

Standard Function

The following paragraphs provide brief descriptions of the standard features incorporated in the FUJI elevator. Please feel free to approach our sales personnel for further clarification on these standard features.

Fully Selective Collective Control	When in automatic or attendant control, the elevator stops in response to the in car registration while automatically follows landing call up and down: for example a passenger could register a call at any call landing and direction.
Overload Non-Start	When the car load exceeds the capacity or rated load of the elevator, the elevator will stop operation with the doors fully opened on that floor and a buzzer is announced. The buzzer will stop when a sufficient number of passengers have exited the car and the car load is less than the rated load.
Full Load Automatic Bypass	When the car load has exceeded 80% of the rated load or capacity of the elevator, the elevator will automatically ignore all the hall calls in the direction of service and respond to in car registration only.
False Calls Cancellation / Anti-Nuisance Cancellation	All car calls are automatically cancelled to avoid unnecessary stops caused by registration of nuisance car calls when the numbers of car calls registered do not correlate with the car load.
Wrong Registration Cancellation	If the passenger realized that wrong button was pushed and registered at the car operating panel, cancellation can be made to the wrong registration by pushing the same push button twice incessantly.
Clear Registration at Changing Direction	When the elevator reached the last landing and changing travel direction, all the registrations behind its present travel will be cancelled at once.
Independent Service	When the elevator switched to independent service, the function will act as exclusive travel which overlooks all landing calls and the automatic door opening and closing is blocked. Other features are similar to attendant service.
Continuity of Service	The system will exclude an elevator from the assignment of hall calls when the car cannot respond to the calls registered. Another car in the group will operate as a backup for the excluded car to ensure continuity of service to all hall calls.
Car Light & Fan Automatic Shut Off	The elevator with this energy saving feature will automatically switches off the car internal lighting and ventilation fans when no calls are registered after a predetermined period of time.
Automatic Parking	During off-peak hours, after the elevator cars have been dormant with doors closed for a predetermined amount of time, the system disperses each car to a designed location (main floor and upper floor), thus allowing more efficient service to future hall calls.
Emergency Car Lighting	An emergency LED light located at car operating panel switches on automatically in the event of a power failure, providing illumination within the car. The emergency light will allow any passengers inside the car to locate and utilize the interphone or the alarm bell to alert the building superintendent.
Alarm	During emergency, by continuously pressing the alarm button in the operation panel, the alarm installed on the car lift pit would sound to alert the security or building superintendent.
Clock Control	With the built in clock system by real time, the exact time of the elevator breakdown could be recorded in the Error Log. The clock control can also be used to initiate the required functions precisely by time.
Attendant Service	The operating mode of an elevator can be switched to attendant service from the normal full-automatic operation by activating this override switch as and when required. This switch is installed on the maintenance recess panel, which is located on the lower part of the car operating panel. When hall calls are registered, the appropriate direction arrows in the car will be illuminated to indicate the service direction of the car. The automatic door closing is blocked and the door can only be closed by the attendant who keeps pressing on the door closing push button.
Inspection Operation	It is a function for field mechanic or technician to carry out maintenance, inspection or testing task. When entering inspection operation, the elevator will come into inching operation at approximately speed of 0.3m/s.

Standard Function

Full Height Sensor Door Safety Device	This versatile door safety device re-opens closing doors immediately when the infrared beam installed on the car doors is interrupted. The doors will close again after re-opening. Standard type is the multiple beam infrared safety rays which cover the full height of the car doors and the other optional type is multiple beam infrared safety rays which cover the full height of the car doors incorporated into door safety edge (2 in 1 functions).
Automatic Control Door Opening Time	When the elevator is in automatic mode, the door will close automatically by delay after the elevator arrived at a landing with the door open. The default delay is 3 seconds for a landing with or without any call and the delay time can be changed by setting the relevant parameter.
Pre-Closing Door by Door Closing Button	When the elevator door is open at automatic mode, the door can be closed immediately before the delay elapses by pushing the door closing push button.
Re-Open with Hall Call	While the doors are closing, they can be re-opened by pressing the hall button.
Main Floor Shut Off / Parking	The elevator car can be called to the main floor to be shut off and regain the normal service automatically by the key switch located at the hall push button faceplate.
Interphone System	In case of emergencies, the interphone installed inside the elevator facilitates direct two-way communication with the rescue personnel in the motor room. Communication is also possible with the building superintendent if an optional intercom is installed in the building control room. The interphone is activated by simply pressing the interphone button on the car operating panel.
Car Arrival Chime	An electronic chime provides an audio signal to inform waiting passengers of the arrival of the elevator car at each floor. The chime can be mounted on the top or bottom of the car, or at each landing floor if required.
Fire Emergency Return	When the building's fire or smoke detectors are activated or the switch on the supervisory panel (optional) is activated, all calls are cancelled and all the elevators will immediately travel to the main lobby and park there with the doors fully open. However, the electrical signal that indicates the actuation of the fire sensors must be supplied to the elevator controller by others.
Power on Re-leveling	If power off or malfunction, the car may stop between floors. In this case, the car will move to the nearest floor when power is restored.
Historical Fault Log	The historical fault log keeps the latest 20 fault records concerning the occurring time, floors and codes.
Self-Diagnosis of Malfunctions	Controller can save the most recent 60% malfunctions and show them quickly on screen for diagnose.
Floor and Direction Indicator in the Car	The indicator located at the car operating panel will display the number of the arrival floor and the up or down direction of the elevator for passengers inside the car.
Floor and Direction Indicator at Hall	Displaying the arrival floor and the up / down direction at hall.

Passenger Elevator Function

Optional Function

The features described in the proceeding paragraphs are optional features which may be added to the standard features of an elevator. The list of optional features provided here are not meant to be exhaustive and the customer is encouraged to approach the sales personnel on additional features that are not described in these paragraphs.

Group Control System	The group control system for three or more elevators employs artificial intelligence and fuzzy logic. The highest refined knowledge and experience harnessed in the field of group control have been incorporated into the microprocessors, allowing car assignments to the most used location and thereby providing superb elevator efficiency and optimum service. The following main features are included in the group control system.
Up Peak Service in Group Control	This option only available with the in group control by time relay setting or by manual switch. When more than three up going call are registered on the main landing, the up peak service traffic mode will be actuated, whereby all the elevators will immediately return to the main landing with door open as soon as they accomplished the up peak service mission. This up peak service will regain to normal service when the up peak service time is over which is determined either by time relay setting or by manual switch.
Down Peak Service in Group Control	This option only available with the in group control by time relay setting or by manual switch. When the situation in which elevators descend to the main landing fully loaded appears, the down peak service travel mode will be actuated, whereby all the elevators will immediately return to the top landing with door open as soon as they accomplished the up peak service mission. This down peak service will regain to normal service when the up peak service time is over which is determined either by time relay setting or by manual switch.
Zoned Waiting Service	This option only available with the in group control. When every elevator stayed waiting more than 60 seconds, the group control activated the zoned waiting service for example, a) if no elevator is located on the main landing and the landing below it, the system will assign an elevator with easier access to the main landing, waiting there with door closed. b) if two of the elevators are in the normal service while no elevator is located on any of the upper floors above the intermediate one, the system will assign an elevator with easier access to the predetermined upper landing, waiting there with door closed.
Operating By Emergency Power (Source Automatic)	When the normal power supply fails, this optional feature will direct each elevator automatically to a specified floor, one-by-one, powered by the building's standby generator. When the elevators car arrives at the specified floor, the doors will open to allow passengers to disembark and then the elevator will shut down. If required, one or more designed elevators can respond to car and hall calls under the normal operation mode but powered by the building standby generator.
Voice Synthesizer / Announcer	The synthesized voice announcer makes a voice announcement of the approaching floor during every leveling time, elevator travel direction, door closing, playing pre-recorded music and etc.
Uninterrupted Power Supply (UPS)	During normal power failure, the uninterrupted power supply (UPS) converts stored energy from its bank of rechargeable batteries to drive the elevator car to the nearest floor and opens the elevator doors to let the passengers out. The UPS optimizes the use of the stored battery power by selecting the direction which requires the least effort. (This device is suitable for those buildings without an emergency power source allocated for the elevator.)
Supervisory Panel	With this panel, the building superintendent can monitor elevator operations and control emergency operations from the building's control room or electrical room. Position indicators, direction lights and intervenes can be installed on this panel if requested. Additional features can also be accommodated where possible.
Non-Service of Specified Floor	A key switch can be installed on the maintenance recess panel, which is located on the lower part of the car operating panel, to suspend elevator service to specified floor(s) when activated. This feature allows the client to selectively suspend elevator service to selected floors for various reasons such as unoccupied floors, after office hour's operation or even for security reasons.
Auxiliary Car Operating Panel	An auxiliary car operating panel can be installed on the unoccupied front return panel in large capacity elevators or elevators in high occupancy buildings to provide easier access to passengers in the car. Special auxiliary car operating panels with features catered to the handicapped are also available upon request.
Floor Identification by IC Card in Car	The card reader is integrated in the car operating panel for identification check in to the floors which access is permitted by authorization only. There are two ways IC card control in the car available as follows: 1. The card allows for a specific floor only so that the card bearer can have access to all the free access floors and the one which entry is permitted by his card. 2. A specific card allows for the access to several controlled floors so the card bearer can register his or her destination floor within a predetermined time delay after checked in with his card in the elevator car.

Optional Function

Handicapped Car Operating Panel	The handicapped car operating panel can be located either below the master car operating panel or predetermined height according to handicapped requirement at the left car enclosure. This car operating panel shall have braille push button for floors, door close, door open, intercom and alarm.
VIP Priority Service	With VIP priority service, a VIP landing is preset, where a VIP switch is integrated in the landing call button panel. A VIP service is activated by resetting the switch once, whereby all the landing and in car registration are cancelled immediately and the elevator travel directly to the VIP landing with door open when it arrives. Both the automatic door closing and landing calls are blocked to enable the VIP passenger to select the destination floor and closing the door by pushing the door closing push button constantly until the door is fully closed. The elevator will regain normal operation once the VIP passenger leave the elevator car.
Earthquake Sensor Device	With the earthquake sensor device, a contact signal generated by the earthquake detector is sent to the controller in the event of an earthquake. The control system will in turn order the elevators in service to land to the nearest landing with door open to release the passengers.
Floor Identification by IC Card at Landing	The card reader is integrated in the hall call button panel on every landing for identification check in to the floors which access is permitted by authorization only. There are two ways IC card control at landing can be used. These are as follows: 1. The card allows its bearer to register a call for the specific floor only on the landing so that the card bearer can have access to all the free access floors and the one which entry is permitted by the card. 2. A specific card allows for the access to several controlled floors so the card bearer can register its destination floor within a predetermined time delay after checked in with the card in the elevator car.
Community Monitoring System	The elevator community monitoring system is to establish a platform for intelligent elevator monitoring cell. The use of anti-interference ability of the CAN bus in real-time transmission of data; obtain elevator's fault and base information so that we can monitor the fault information for processing and analysis. This community monitoring system network are flexible with 4 CAN interface and each interface can connect up to 25 elevators which has the ability to monitor a total of 100 elevators. When the elevator breaks down and records a timely tip, this powerful database features all the fault information and can be collated for analysis in order to guide the maintenance of elevators.
Energy Regenerator Variable Frequency Drive System	In case the motor is in operation while releasing the mechanical energy of the system, the regenerative electrical energy will charge the DC capacitor bank via the switch of inverter which will cause DC pump voltage. When the pump voltage reached the set value, the external regenerative energy inverter will start operation rapidly and effectively to convey the DC pump energy consumed in the braking resistor to power grid through active inverting. This system is implemented for cost saving on power supply and it is environmental friendly.
Voltage Compensating Alternative Stabilizer	The voltage compensating alternative stabilizer is required if the fluctuation of voltage or load changes frequently occurs which will damage the elevator electrical parts and cause elevator to breakdown. This device will automatically function to maintain the stability of the output voltage before going to the elevator system.
Destination Dispatch System (DDS)	Destination Dispatch System (DDS) is a kind of intelligent dispatch system for the destination floor. With this system, several elevators (maximum 8 units) can be grouped and the passengers can input the destination floor in the human-machine interactive device, then one of the elevators can be distributed by the system to transport the passengers according to the current status of run of the elevators. Characteristic of destination dispatch system is that the information on destination floor has been obtained prior to elevators distribution, which means that the arrival time of the passengers has been considered in the elevators dispatching information. Contrast to the traditional dispatch system, the destination dispatch system can greatly reduce the average time of arrival and long-time wait rate. The dispatching advantages of DDS controller are especially obvious among the buildings with dense crowd, which behaved as: the destination dispatch system can execute zoning service according to the information on destination floor registered by the passengers, to possibly shorten the round travel of the elevator and transport the passengers with the shortest time. The design objective of the system is to improve the accuracy of group control dispatching, reduce the waiting time during busy time (especially at the peak hours) and long-time wait rate, as well as apply to different architectural layouts.
System advantages	* High efficiency and safety. It integrates various advanced dispatching technologies such as expert system, fuzzy logic and neural network, to ensure the high efficiency and safety of the elevator based on CAN bus. * Comfort travel. Waiting time and long time wait rate of the passengers can be effectively reduced by distributing the destination floor areas, to avoid the crowding during waiting and reduce the anxiety of the passengers during waiting. * Cost reduction. Improvement of the operation efficiency can reduce the total quantity of elevators equipped in the building and reduce its construction cost.

Traction Type Villa Elevator

Characteristics of A Traction Type Home Elevator

- It does not need machine room. It saves the building cost.
- It applies counter level style and gantry style elevator structure according to door opening requirements of the housing structure.
- VVVF drive technology: Home elevator dedicated micro-computer control is smooth and comfortable.
- Special traction machine base frame is fixed on guiderail. The building does not bear any load.
- Machine: It can apply 220V single-phase power supply of ordinary family use. It does not need to apply for industrial power supply.
- Automatic door operator: Variable frequency energy-saving, safe and reliable
- UPS (backup) can release the passengers during power failure.
- In the operation, total rated power is 1.5KW including 1.1KW for drive system.



Platform Style Villa Elevator

Equipped with a new generation of running components, feel unprecedented smoothness and comfort. Equipped with newly developed safety functions, it strengthens the safety and stability of the elevator and improves the comfort of the elevator.

Brand Host	Silent door operator
Electronic Safety Gear	Magnetic Scale
One Key Call	360°Light Curtain Protection
Power Failure Emergency Leveling	



Car Decoration and Design

SGM-V601

Ceiling: champagne gold mirror stainless+Acrylic
 Back wall: two side champagne gold mirror stainless steel,
 LED atmosphere lamp+middle art stainless steel
 Side wall: two side champagne gold hairline stainless steel+
 middle champagne gold mirror stainless steel
 Front wall: champagne gold mirror stainless steel
 Car door: champagne gold mirror stainless steel
 Floor: PVC



360° panoramic show



SGM-V602

Ceiling: Blonde hair grain stainless steel rose,
 Mirror stainless steel, Acrylic lighting decoration, LED
 Car wall: Blonde hair grain stainless steel rose,
 Rose gold mirror etched stainless steel
 Handrail: Rose gold stainless steel round handrail (optional)
 Floor: PVC



360° panoramic show

SGM-V603

Ceiling: Paint steel plate, acrylic
 Rear wall: Mirror stainless steel,
 sapphire sand stainless steel
 Side wall: Mirror stainless steel,
 sapphire sand stainless steel
 Front wall: Sapphire sand stainless steel
 Floor: PVC(optional marble)



360° panoramic show



SGM-V604

Ceiling: White painted surface, black titanium edge
 Rear wall: Wood Veneer, black titanium compose
 Side wall: Wood Veneer, black titanium compose
 Front wall: Black titanium mirror stainless steel
 Floor: PVC(optional marble)



360° panoramic show



Car decoration and design



SGM-V605

Ceiling: champagne gold mirror stainless+Acrylic
 Back wall: two side champagne gold mirror stainless steel,
 LED atmosphere lamp+middle art stainless steel
 Side wall: two side champagne gold hairline stainless steel+
 middle champagne gold mirror stainless steel
 Front wall: champagne gold mirror stainless steel
 Car door: champagne gold mirror stainless steel
 Floor: PVC



360° panoramic show



SGM-V606

Ceiling: Blonde hair grain stainless steel rose,
 Mirror stainless steel,Acrylic lighting decoration, LED
 Car wall: Blonde hair grain stainless steel rose,
 Rose gold mirror etched stainless steel
 Handrail: Rose gold stainless steel round handrail (optional)
 Floor: PVC



360° panoramic show



SGM-V607

Ceiling: Mirror stainless steel rose gold + downlight
 Car wall: Hairline stainless steel rose gold,
 mirror stainless steel rose gold + etching
 Car door: Hairline stainless steel rose gold
 Handrail: Hairline stainless steel rose gold flat handrail
 Floor: PVC



360° panoramic show



SGM-V608

Ceiling: Mirror stainless steel, LED downlight,
 white acrylic transparent board
 Car wall: Gary-white makeup steel plate / new ultra-
 thin rock plate
 Floor: Natural marble



360° panoramic show

Car decoration and design



SGM-V609

Ceiling: Starry sky top
 Front wall: Black titanium stainless steel, safety glass
 Side wall: Black titanium stainless steel, safety glass, light strip
 Rear wall: Black titanium stainless steel, safety glass
 Control box: Touch screen
 Floor: Marble



360° panoramic show



SGM-V610

Ceiling: black titanium mirror stainless steel, Acrylic, downlights
 Front wall: black titanium mirror stainless steel
 Side wall: black titanium mirror stainless steel, safety laminated glass
 Back wall: black titanium mirror stainless steel, safety laminated glass
 Landing door: black titanium mirror stainless steel, safety laminated glass
 Floor: Standard PVC (Optional marble)



360° panoramic show



SGM-V611

Ceiling: Mirror stainless steel, LED lighting
 Car wall: Rose gold hairline stainless steel, toughened transparent glass
 Floor: PVC(optional marble)



360° panoramic show

SGM-V612

Upper and lower cover: Hairline stainless steel
 Decorative top: acrylic transparent board, stainless steel mirror, lamp
 Car wall: Hairline stainless steel, laminated glass
 Armrest: stainless steel pipe
 Floor: PVC(Marble)



360° panoramic show



Decoration Series

Human-Machine Interface



Touch Screen Series



The pictures are plotted by computer and are likely somewhat different from the actual products.

Lop Control



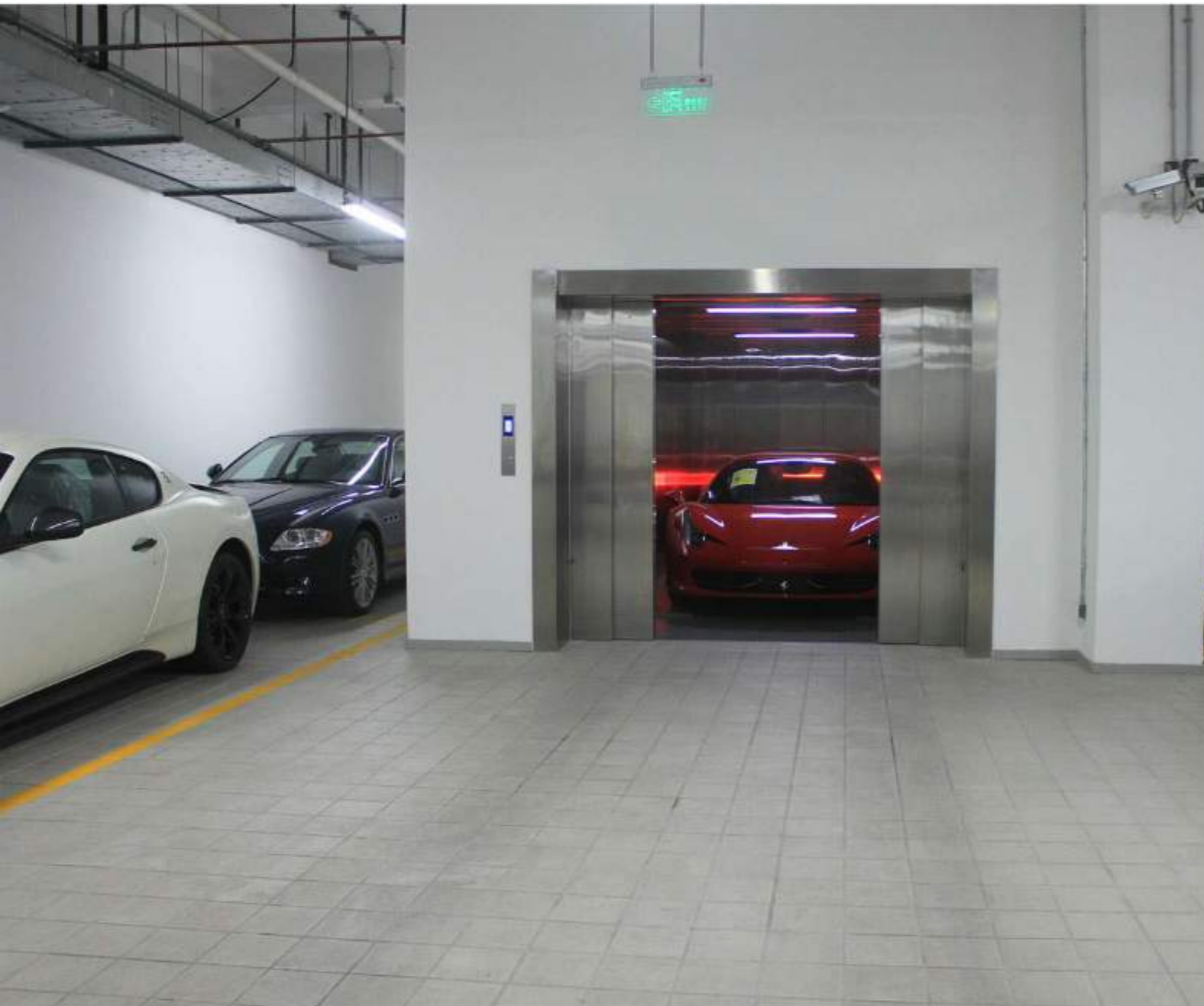
The pictures are plotted by computer and are likely somewhat different from the actual products.

Automobile Elevator

Based on vehicle spacer and required performance characteristics, SIGMA-wide computer elevator car intelligent vehicle access control system and management system for scheduling signal, can provide the elevator car guaranteed foolproof operation.

It Is Safe and More Convenient

The vehicle access and parking management system and the scheduling position signal protection system can be used to provide maximum convenience, making sure your car is more secure when loading and unloading of the car.



The More Smooth Energy-Saving Effects

Uses VVVF control technology to reduce energy consumption and operating noise, and improve the degree of smooth operation.

Dual Operation Buttons Box

There are two operation box buttons in the car. Therefore the driver can operate the elevator in the car without stepping out of it.

Special Display System

Special circuit control and display system is convenient for the drivers inside/outside the car.

Front/Rear Door Opening Are Available

The elevator car sets front/rear door opening which is more convenient for the safety sector and for the cars to enter into/exit from the elevator cars.

Safety Guide Device

Safety guide device sets in the car ground to ensure fine security of both the cars and the elevators.

Freight Elevator

SIGMA serial freight lift has the bright, spacious, economical and practical car with the optimized design. It offers the swift and convenient cargo transport. It has the superior characteristics such as the fine security and reliability, smooth running, large loading capacity etc. It can be applied in various uses and environments such as factory, warehouse, shopping center, library and so on. It can always satisfy the customer's requirements. It is the finest cargo transport tool. SIGMA serial freight lift utilizes the advanced micro-computer control technology, through the technical merge, it greatly enhances the performance and quality of the freight lift and lowers down the trouble occurrence ratio. Because it adopts the AC two-speed electric drive technology, it makes it more simpler for the lift structure and more convenient for the maintenance.

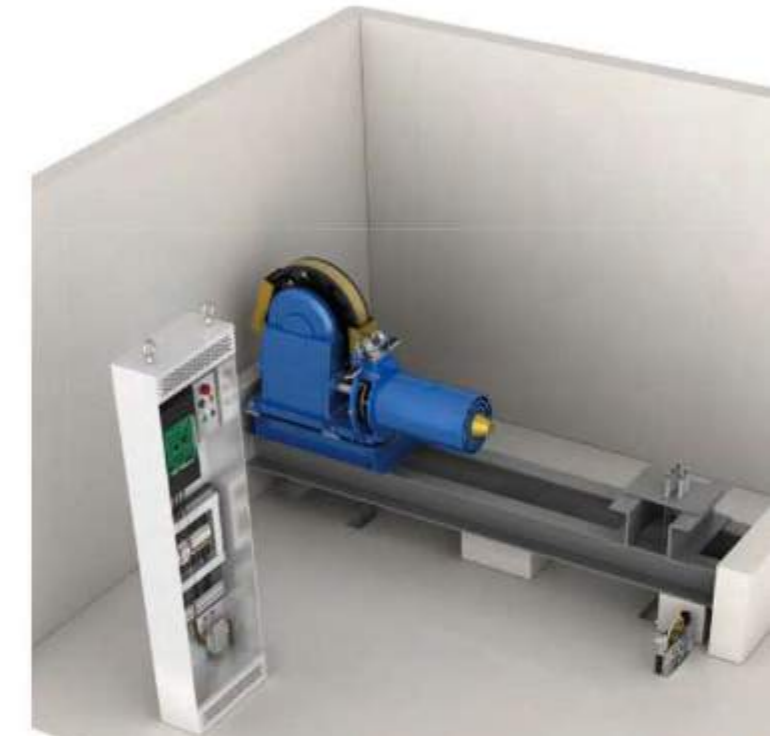
A Heavy Load Can Bear A Heavy Weight

Starting with the demand of cargo transportation, SIGMA applies advanced technologies to every design detail, so as to provide customers with more convenient freight transport experience in buildings.



Super Large Space

The structure of the lift car is optimized, so the space becomes larger and brighter. Large cargos can enter and exit the elevator freely, which makes the cargo transportation more efficient and convenient.



Delay Door Closing button

The lift car is equipped with a delay door closing button. After pressing the button, the door will be opened for some time, which is convenient for loading and unloading goods.

Superior Heavy Load Design

The high-strength lift car frame perfectly matches with the specially reinforced elevator chassis, which is firm and reliable, with stronger load-bearing capacity, and prolongs the service life of the lift car.



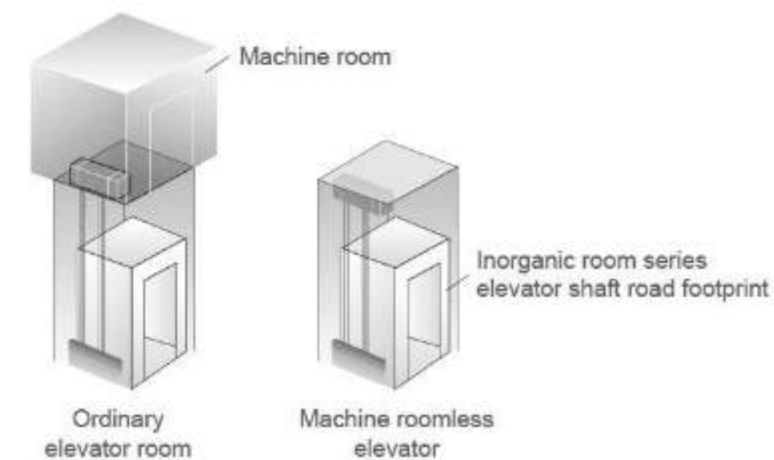
Machine Room-Less Freight Elevator

It easily merges with the building

Machine room-less goods elevator compresses the originally top, lower or side machine room into the well. It applies small bulk traction machine drive and lower sheave structure. It brings about the more compact structure, the more reasonable space arrangement. Therefore goods elevator completely merges with modern buildings. It produces the more perfect building structure.

Choice green environment protection

Mechinery-less & gearless occluding mode and low frictional composition reduce the wear-ability and energy loss. It is smooth and comfortable in running. Meanwhile, it needs no grease renewal. It has no grease pollution. It is natural and peaceful. It is your best choice in practicing green environment protection.



Dumbwaiter Elevator

Using industrial computer (PLC) or computer control, complete specifications, novel structure, fine workmanship, with safe, reliable, stable, easy to operate the car and landing doors made of high quality stainless steel plate production lines, luxury and beauty, widely used in hotels, restaurants and other units, is popular among customers.



The Advantageous Performances

- Electric lock function: call the base station is equipped with electric locks ladder box, used to start and shut down the elevator control circuit;
- Run fault protection function: When outside the normal run time of 10 seconds, the elevator stopped, to prevent burn out the motor;
- Fault self-display: the diagnosis of faults in code display;
- Self-diagnostic capabilities: the ability to diagnose and Causes;
- Restoring self-insurance function: if the control signal circuit short-circuit the insurance automatically disconnect when the failure to eliminate auto-connect after the insurance;
- Contactor adhesion protection: If contactor coil power disconnected contacts unable to prevent the re-run to ensure safety;
- Call ladder response function: Press the call elevator button, the call number elevator floor button light, light off the station after the revocation of memory;
- Beeper function: with the arrival Beeper function;
- Door switch status indicator: level elevator door open after running the station, digital display and prompts the ladder open state in this layer;
- Running direction of the display: the direction of the arrow up and down the line-emitting display;
- Floor display: run to the elevator floor by the digital display;



Freight Elevator Car Decoration



SGM-H701

Standard

Ceiling: Paint steel (color optional)
 Car wall: Paint steel (color optional)
 Car door: Paint steel (color optional)
 Floor: Checkered steel plate
 Sill: Steel plate ridge
 Lighting: Energy-saving downlight
 Ventilation mode: Circular fan
 Door opening mode:
 Four panels center opening



360° panoramic show



SGM-H702

Standard

Ceiling: Hairline stainless steel
 Car wall: Hairline stainless steel
 Car door: Hairline stainless steel
 Floor: Checkered steel plate
 Sill: Steel plate ridge
 Lighting: Energy-saving downlight
 Ventilation mode: Circular fan
 Door opening mode:
 Four panels center opening



360° panoramic show

Automobile elevator car decoration



SGM-H703

Standard

Ceiling: Paint steel (color optional)
 Car wall: Paint steel (color optional)
 Car door: Paint steel (color optional)
 Floor: Checkered steel plate
 Sill: Steel plate ridge
 Lighting: Energy-saving downlight
 Ventilation mode: Circular fan
 Door opening mode: Four panels center opening



360° panoramic show

Decoration Series

Human-Machine Interface



SGM-C101
Standard



SGM-L101A
Standard



SGM-L101B
Standard

Car Bumper Strip (Optional)



Black rubber



Wooden

Floor



Plain pattern steel plate

The pictures are plotted by computer and are likely somewhat different from the actual products.

Landing Door Decoration



Double folded center opening



Side door

Color Card Series



SGM-S01
Shrivel Finish Off-white



SGM-S02
Shrivel Finish Fruit Green



SGM-S03
Shrivel Finish gray

The pictures are plotted by computer and are likely somewhat different from the actual products.

Freight Elevator Function

code	name	item	content
AS	driver service	load capacity(kg)	5000kg 3000kg 2000kg 1000kg 630kg
AST	anti-aerodynamic stall internal timer protection	speed (m/s)	0.25 0.5 1.0
CCC	cancellation reversal car call	maximum number of stops	16
DTC	time control of door close	maximum travel (mm)	63m
ECL-C	emergency lighting in car automatically re-charge	control mode	alternating current two speed, microcomputer control
EDC	expediting of door-close	operation mode	IC-2BC(single car signal)
EMB	alarm	door system	direct current door machine
HAND	inspection running	door opening	centre opening two folding or two folding
HCR	automatically reverse on top floor	traction machine position	upper of shaft-well
HOS	door opening control when running	power supply	power supply 380V 50Hz, lighting 220V 50Hz
LCR	automatically reverse on ground floor	regulation benchmark	GB7588-2003
NXL	docking floor changing		
RDC	repeat door closing	performance index	
ROHB	reopen by hall button	leveling accuracy	≤±15mm
SDE	safety door edge SDE and AMS must choose one	run vibration (O-P)	a horizontal ≤15cm/s ² b vertical ≤25cm/s ²
SFL	safety docking		floor when running

Standard functions

code	name	item	content
SO	stop and door open	noise in car when running	≤55dB(A)
CFO-A	fan automatically stop	noise in door open-and-close process	≤65dB(A)
CLO-A	light automatically off	machine room noise	≤80dB(A)
DOB	door-open button operation	start frequency	180 times/hour
DCB	door-close button operation		
RBNR	motor-no turn when running protection		
CNOCP	contactor non-releasing non pick-up protection		

Optional functions

code	name
ABP	full-load by pass
ARL	automatic re-leveling
FE	fireman's emergency operation
FER	fireman's emergency backing
GC	car upper/down approaching gong
MFP	back to main floor

code	name
OLHL	overload display in car
ITP	internal call device(6V power)
OLH	overload holding stop
AMS	door sensor protection device
WOA	automatic running w/o driver

Escalator

SIGMA series escalator adopt the advanced international technology for its design and manufacture. It meets the standard of GB16899-2011 of Safety rules for the construction and installation. It has the features such as exquisite structures, consummate step, smart railing, pleasing outline model, smooth running, easy maintenance etc. It provides vast passengers with a brand-new feel of brightness and coziness.

It makes the feelings of the extra-ordinary and luxury, which is coming from modern architectures. It is widely applicable in various public places, such as the shopping mall, supermarket, subway, airport, exhibition halls.

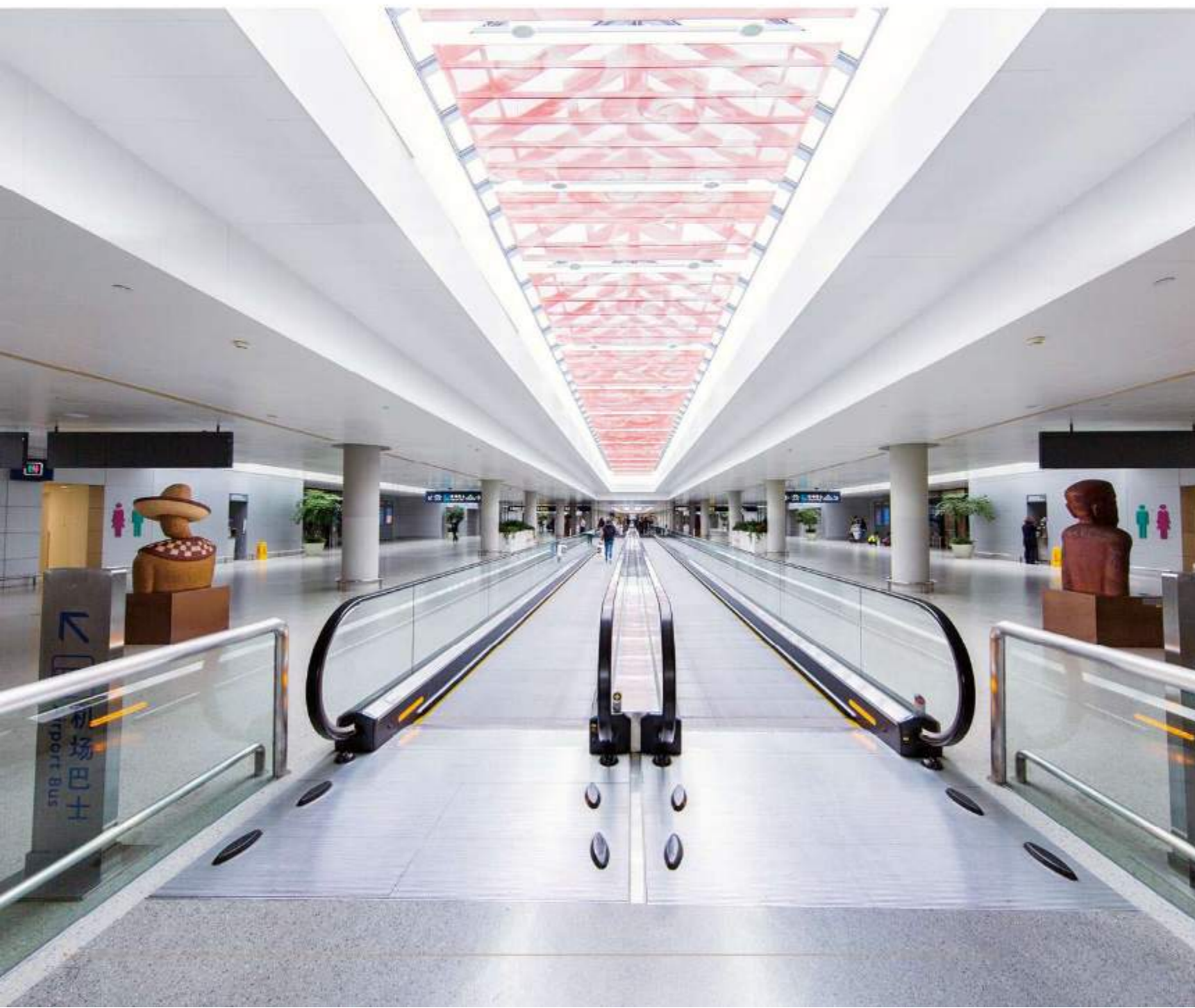
Advantageous Performances of Escalator

- The truss utilizes first class angle steel with unique structure, high strength and complete durable features.
- The overall design is concise and smooth and compatible.
- The advanced international craftsmanship ensures the accuracy of steps.
- The large size diameter of step roller with stable running, low noise and long lifetime.
- The human-oriented handrail entrance is secured by brush.
- The skirt panel, inside and outside of cover plate are made of stainless steel.
- Etched stainless steel from panels are available with various patterns.
- The main board of super CPU monitors the operation in real time, which can automatically stop the running and records the error code in case of any abnormal condition happen.
- VVVF is optional for control running speed to save energy. It can prolong the lifetime and operations cost.



Moving Walk

In the multi-colored modern metropolis, the public traffic and transport occasions such as large-size supermarket, public construction, airport, exhibition center, transport transformation station and so on, the auto-walk can not only tackle the traffic problem of gigantic stream of people, but also satisfy feel that it is like walking in the flat road while actually up and down in purchasing the goods out of its own characteristics. It is also applicable for the long-distance walking, conveying the luggage vehicle, baby's cart, purchase vehicle, handicapped vehicle etc. It is greatly convenient for people's outing and purchase. Therefore, it becomes the first-choice solution in various large-size supermarkets, airports, exhibition centers, transport transformation stations because of its convenient, prompt and pleasant riding needs.



Advantageous Performances of Moving walk

Compact structure, ease strain

short pallets can greatly reduce space span, which can flexibly fit the building structure and save the construction space. It comprises H version (horizontal), I version (incline) and C version (compact) can let the customer have a free choice on his original layout.

Conform to quality/safety standard

Slip-free grooves on pallet surface have an excellent slip-proof function which makes the ride safe and comfortable. Slightly inclined combs can make trolleys easily get on conveyors. SHMD traction machine with complete protecting function runs smoothly and drives efficiently. Advanced microcomputer controlling system can fully monitor the running status of the moving walk.

Stable and reliable investment

The pallet directly connecting with the chain which makes the running more smoothly and quietly, thus the service life is extended and its maintenance can be easily conducted. Special designed big wheel handrail drive runs in low noise and big power, which improves the running condition of handrail, its life is hence prolonged. Unique angle iron structure has a big load capacity, which greatly improves the overall stability and service life.

Colorful decoration

Various styled handrail can meet personal demand in different environments. Beautiful stainless steel floor plate has a three-dimension effect. Inner and outer cover plate adopts stainless.

Incomparable economical

The moving walk fully utilizes advanced manufacturing process, greatly improves product performance and service life, the most direct effect is that the operation cost of the customer is reduced. The optional VVVF drive technology yields great energy-saving, reducing the running cost to the maximum.

Safety Technology



Handrail inlet

The escalator is richly endowed with the intelligence and popularity by the novel, distinctive, elegant, tensile and modernized streamline handrail inlet and outlet design model, it appears to be more beautiful in the outer appearance, it displays the nobleness and imposes manner of the conveying constructions.



Skirt panel illumination

The skirt board illumination arranged alongside the step's arc moving contour makes the passengers feel more comfortable and safe.



Automatic start / stop travel device

The infraed sensors located on both sides of the front plates at the entrance and exit are able to conduct real time detection for the approaching passenfens and communicate with the controlling PC to automatically activate the escalator (or moving walk) and after the passenger leaves, it can be automatically stopped, reaching the most optimized energy-saving effects.



Handrail illumination

The handrail illumination has been installed in the handrail support. The gentle light adds charm to the unning escalator.



Inclined handrail (It is applicable for public traffic type escalators)

The stainless steel enclosed and inclined handrail fits for occasions with large stream of people and heavy loading. It can extend the riding space to the greatest extent and increase the effective safety coefficient.

Heating device

Each escalator usually installs three heating devices, one is beside the host in the upper machine room, it mainly heats the host, the second is installed in the mid escalator, and the third is in the lower part, it mainly heats the whole escalator.



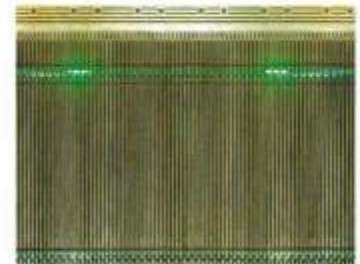
Running direction indication

The direction and forbidding the use of novel display identifies a long circular structure, placed inside the cover on the escalator entrance, simple and elegant, easy to watch the operation of the escalator or the forbidden line instructions to ensure the safety of passengers the freedom to ride.



Illumination for the passengers

Green light softly beams out from the space between the engaged teeth of the two neighboring steps to remind the passengers to be aware of the level sections both at the entrance and exit, resulting in increased security for the passengers.



Skirting brush

The skirt brush, which installs on both sides of the skirt panel and above the step, can prevent the passengers' shoes from touching the skirt panel. Meanwhile, it can safely and effectively avoid the foreign matters from being taken into the gap between the step and skirt.



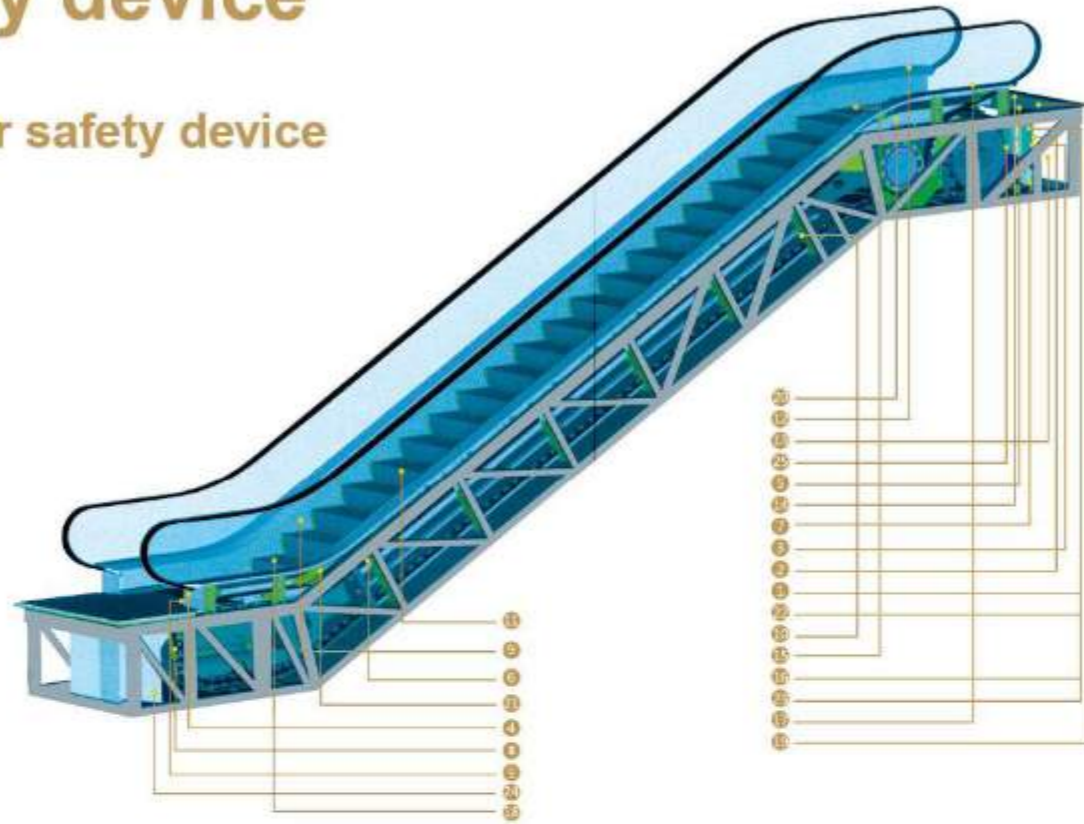
Step chain inside the roller

The roller has been internally installed in the specially-designed roller step chain. It can effectively fulfill the reduction of the noise during the driving process and bring about a more smooth and quiet operation.

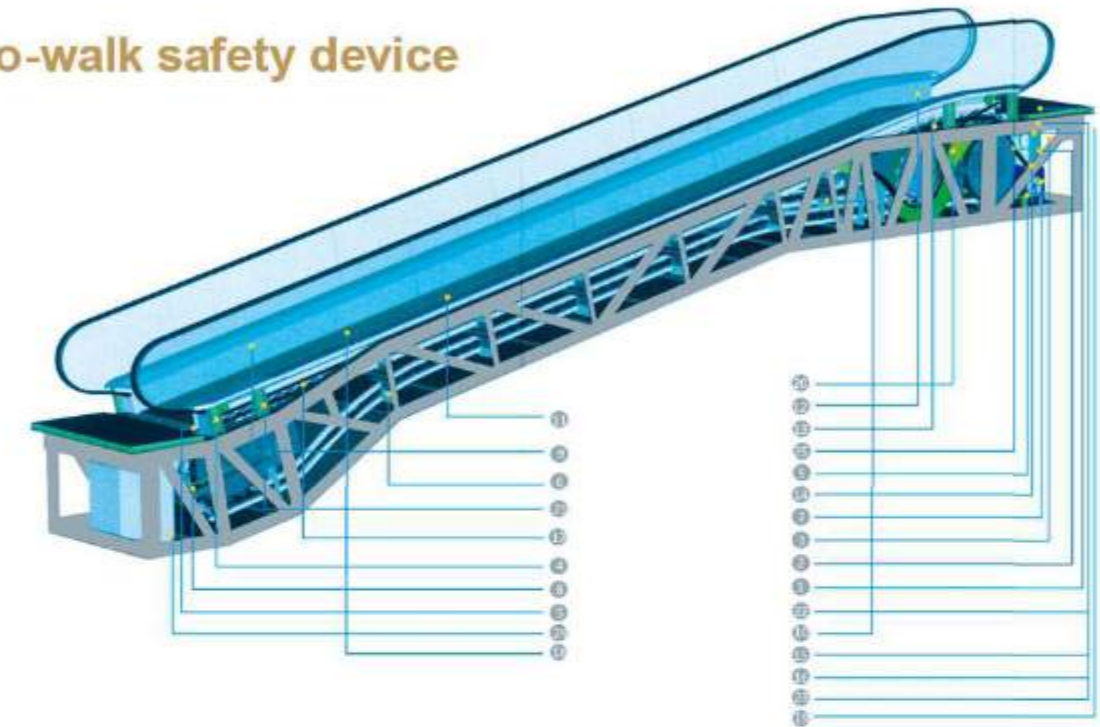


Safety device

Escalator safety device



Auto-walk safety device



Standard safety device

1. **Lack of phase, error phase protection**
If lack phase or error phase has been checked out, the escalator (auto-walk) will automatically stop the operation.
2. **Motor over-load protection**
When the current exceeds 15% of the current rating, the escalator (auto-walk) will automatically stop the operation.
3. **Electrical appliance loop protection**
It offers the automatic circuit disconnecting device to protect the circuit and mains components of the escalator (auto-walk).
4. **Handrail inlet protection**
When some foreign substance has been clipped in the handrail inlet, the escalator (auto-walk) will automatically stop the operation.
5. **Comb plate safety device**
When some foreign substance has been clipped in or between the combs, the escalator (auto-walk) will automatically stop the operation.
6. **Step sagging protection device**
When there is abnormal step bending, the escalator (auto-walk) will stop the operation before the step entering into the comb plate.
7. **Broken drive-chain safety device**
When the drive-chain has been over-stretched or it is broken, the escalator (auto-walk) will automatically stop the operation.
8. **Broken step chain protection**
When the step (pallet) chain has been over-stretched or it is broken, the escalator (auto-walk) will automatically stop the operation.
9. **Over-speed protection**
When there is over-speed to the escalator (auto-walk), it will automatically stop the operation.
10. **Direction reversal protection**
When it comes the unintentional reversal of the direction of travel, the escalator (auto-walk), will automatically stop the operation.
11. **Security line**
The yellow synthetic resin security line is located in the front position and two sides of the escalator tread so that the passengers will not tread in-between the edge of the adjacent step and the lift group lengthened skirt panel. The security line on both sides of the step is higher than tread surface. (The auto-walk offers the selective yellow spray-painted security line.)
12. **Emergency button**
When the button has been pressed down, the escalator (auto-walk), will stop the operation.

13. **Skirt panel protection**
When some foreign substance has been clipped in between the skirt panel and the step, the escalator (auto-walk) will automatically stop the operation.
14. **Brake protection**
When the electric force falls short of supply or it acts any of the safety device, the brake function goes into effect by the safety device through the spring resilience action. In this way, the escalator (auto-walk) stops the operation.
15. **Safety inspection switch**
It is a safety device to prevent from the escalator (auto-walk) starting during the inspection and maintenance.
16. **Warning lights**
Illumination exists in the upper and lower ends of the escalator (auto-walk), in the lower part of the step in order to remind the passengers of the security matters.
17. **Alarm bell starting device**
The alarm bell rings when it starts the escalator (auto-walk) in order to remind the passengers of the security matters.
18. **Control device for handrail breakage**
When the handrail is broken, the escalator (auto-walk) will automatically stop the operation.
19. **Step&pallet missing protection**
Under normal mode, when detect the missing of step or pallet, the escalator (auto-walk) will stop working. When its under inspection mode, not detecting.
20. **Handrail speed monitor**
Under normal mode, when the handrail deviation of more than -15% to the actual speed for more than 15s, the escalator (auto-walk) will stop working. When its under inspection mode, not detecting.
21. **Floor plate open protection**
Under normal mode, when the floor plate is open, the escalator (auto-walk) will stop working. When its under inspection mode, this switch will be instead by the stop button on the manual controller.
22. **Motor brake lifting detecting**
After starting the escalator (auto-walk), if there is non-lifting of the brake system, escalator & moving walk will stop working.
23. **Motor hand winding device protection**
When the hand winding device is used in the motor, the escalator (auto-walk) and moving walk will stop working.
24. **Skirting brush**
Should follow GB16899-2011no. 5.5.3.4 rules.

Optional Safety Device

25. Auxiliary brake

It prevents from the escalator (auto-walk) slide and ensures the human security in case of the drive chain breakage or the out-of-order of the brake, (It should be allocated with the emergency brake H> 6m.)

26. Comb illumination

The illumination has been installed in the skirt panel near the comb plate, it offers the lighting for the step and the comb plate, it is more convenient for the passengers to up and down the escalator.

27. Conversion function

It can adopt variable frequency control or the automatic starting mode to fulfill the energy-saving.

28. Heating device

Each escalator usually installs three heating devices. One is beside the host in the upper machine room, it mainly heats the host, The second is installed in the mid escalator, And the third is in the lower part, it mainly heats the whole escalator.

29. Fire linkage

When this device comes into action, it can stop the escalator (Passenger conveyor) operation. It is installed near the escalator (Passenger conveyor).

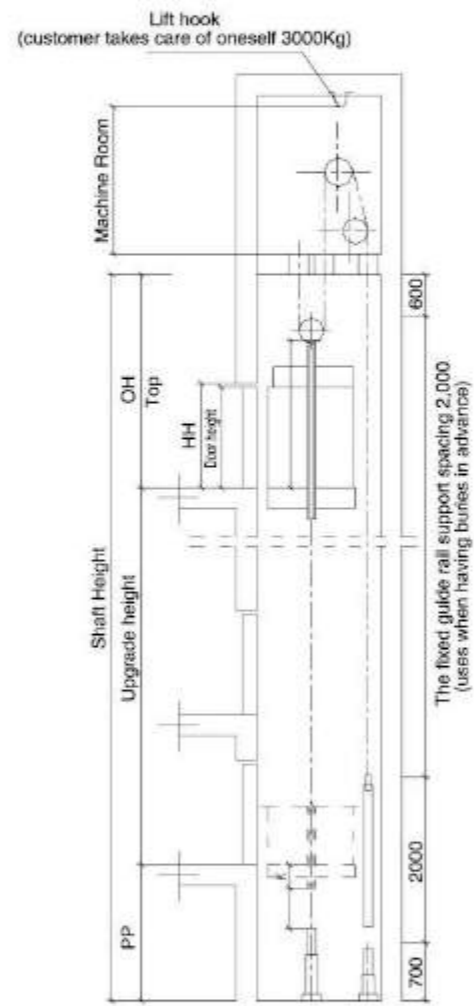
30. Lower machine room drain

When it exceeds the standard water level in the lower machine room, the automatic drain system will start accordingly.(outdoor type)

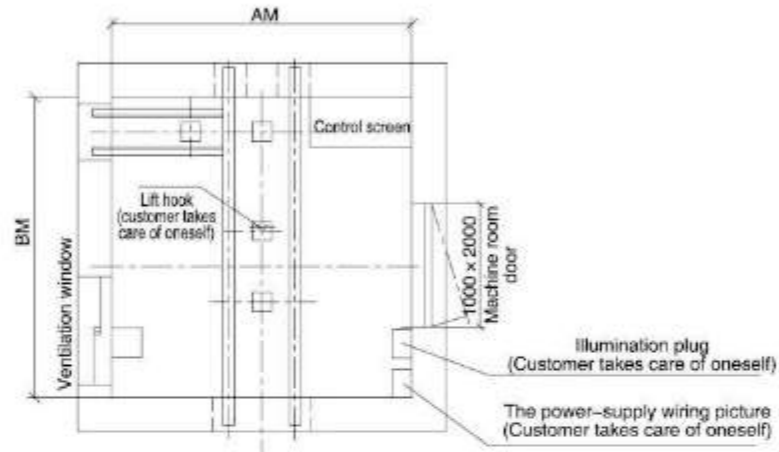


Static electricity protection	Remove static electricity raised from running of steps
Emergency stop button	Push the emergency stop button to stop the escalator/passenger conveyor
Skirting protection	Protection against risk of foreign matters being jammed into clearance between steps and skirting
Handrail entry safety protection	Protection against risk of foreign matters being jammed into handrail entry
Main drive chains safety protection	Protection against risk of drive chains being breakage or over long
Over-speed protection	Protection against risk of speed being over 20% of rated speed
Under-speed protection	Protection against risk of speed less than 80% of rated speed
Un-intentional reversal protection	Protection against risk of unintentional reversal protection
Lack of phase, error phase protection	Protection against risk of phase failure
Short circuit protection	Protection against risk of short circuit
Over-load protection	Protection against risk of motor continually over-load
Step sagging protection	Protection against risk of steps being breakage and sagging
Step chains safety protection	Protection against risk of step chains being breakage or over long
Comb safety guard	Protection against risk of foreign matters being trapped into comb teeth of step(pallet)

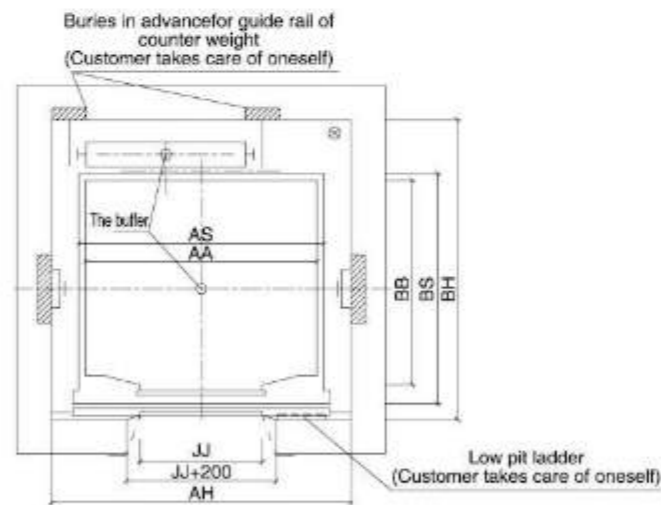
Passenger Elevator Machine Room Construction Layout



Shaft section plan



Machine room floor-plan

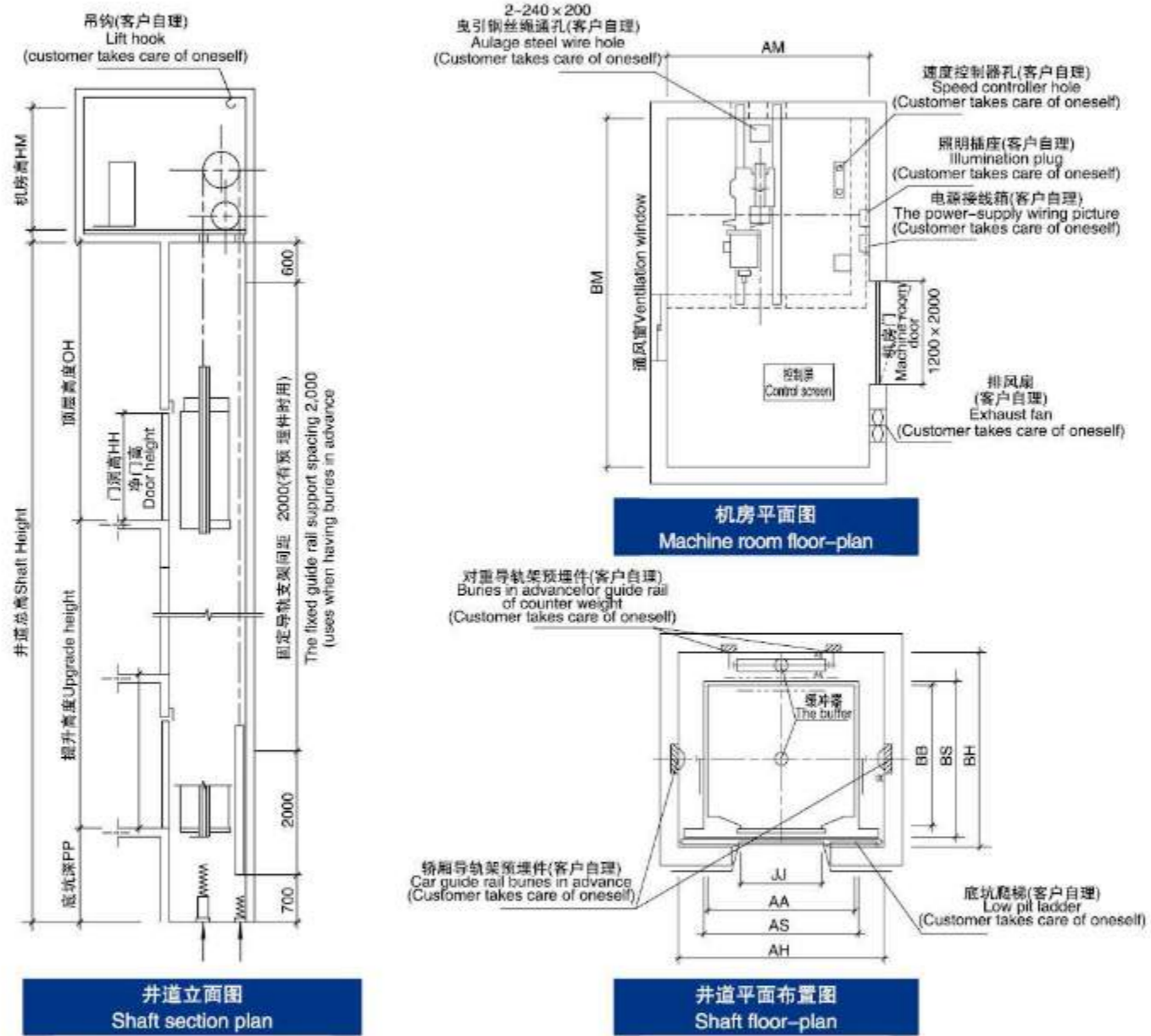


Shaft floor-plan

Passenger Elevator Machine Room Specifications

Speed	Capacity	Number of persons	Size Inside Car		Size Outside Car		Well Size		Machine Room Size		Door-Opening Mode	Door-Opening Width	Door net Height	Ceiling Height	Pit Depth	Machine Room Height
			AA	BB	AS	BS	AH	BH	AM	BM						
1.0	450	6	1400	850	1500	1040	1900	1470	1900	1470	Center opening	800	2100	≥4500	≥1400	≥2200
1.0	550	7	1400	1030	1500	1220	1900	1650	1900	1650	Center opening	800	2100	≥4500	≥1400	≥2200
1.5,1.75	550	7	1400	1030	1500	1220	1900	1650	1900	1650	Center opening	800	2100	≥4500	≥1500	≥2200
1.0	630	8	1400	1100	1500	1290	1900	1720	1900	1720	Center opening	800	2100	≥4500	≥1400	≥2200
1.5,1.75	630	8	1400	1100	1500	1290	1900	1720	1900	1720	Center opening	800	2100	≥4500	≥1600	≥2200
1.0	800	10	1400	1350	1500	1540	1900	1970	1900	1970	Center opening	800	2100	≥4500	≥1400	≥2200
1.5,1.75	800	10	1400	1350	1500	1540	1900	1970	1900	1970	Center opening	800	2100	≥4500	≥1600	≥2200
2.0,2.5	800	10	1400	1350	1500	1540	2000	2050	2000	2050	Center opening	800	2100	≥5200	≥2200	≥2800
3.0	800	10	1400	1350	1500	1540	2000	2050	2000	2050	Center opening	800	2100	≥5400	≥2600	≥2800
1.0	900	12	1600	1350	1700	1540	2200	1970	2200	1970	Center opening	900	2100	≥4500	≥1400	≥2200
1.5,1.75	900	12	1600	1350	1700	1540	2200	1970	2200	1970	Center opening	900	2100	≥4500	≥1600	≥2200
2.0,2.5	900	12	1600	1350	1700	1540	2200	2050	2200	2050	Center opening	900	2100	≥5200	≥2200	≥2800
3.0	900	12	1600	1350	1700	1540	2200	2050	2200	2050	Center opening	900	2100	≥5400	≥2600	≥2800
1.0	1000	13	1600	1500	1700	1690	2200	2120	2200	2120	Center opening	900	2100	≥4500	≥1400	≥2200
1.5,1.75	1000	13	1600	1500	1700	1690	2200	2120	2200	2120	Center opening	900	2100	≥4500	≥1600	≥2200
2.0,2.5	1000	13	1600	1500	1700	1690	2200	2200	2200	2200	Center opening	900	2100	≥5200	≥2200	≥2800
3.0	1000	13	1600	1500	1700	1690	2200	2200	2200	2200	Center opening	900	2100	≥5400	≥2600	≥2800
1.0	1150	15	2000	1350	2100	1540	2600	2100	2600	2100	Center opening	1100	2100	≥4500	≥1500	≥2500
1.5,1.75	1150	15	2000	1350	2100	1540	2600	2100	2600	2100	Center opening	1100	2100	≥4700	≥1700	≥2500
2.0,2.5	1150	15	2000	1350	2100	1540	2600	2100	2600	2100	Center opening	1100	2100	≥5200	≥2200	≥3000
3.0	1150	15	2000	1350	2100	1540	2600	2100	2600	2100	Center opening	1100	2100	≥5500	≥2600	≥3000
1.0	1350	18	2000	1500	2100	1690	2600	2250	2600	2250	Center opening	1100	2100	≥4500	≥1600	≥2800
1.5,1.75	1350	18	2000	1500	2100	1690	2600	2250	2600	2250	Center opening	1100	2100	≥4700	≥1700	≥2800
2.0,2.5	1350	18	2000	1500	2100	1690	2600	2250	2600	2250	Center opening	1100	2100	≥5200	≥2200	≥3000
3.0	1350	18	2000	1500	2100	1690	2600	2250	2600	2250	Center opening	1100	2100	≥5400	≥2600	≥3000
1.0	1600	21	2000	1750	2100	1940	2600	2500	2600	2500	Center opening	1100	2100	≥4700	≥1700	≥2800
1.5,1.75	1600	21	2000	1750	2100	1940	2600	2500	2600	2500	Center opening	1100	2100	≥4800	≥1800	≥2800
2.0,2.5	1600	21	2000	1750	2100	1940	2600	2500	2600	2500	Center opening	1100	2100	≥5200	≥2200	≥3000
3.0	1600	21	2000	1750	2100	1940	2600	2500	2600	2500	Center opening	1100	2100	≥5400	≥2600	≥3000

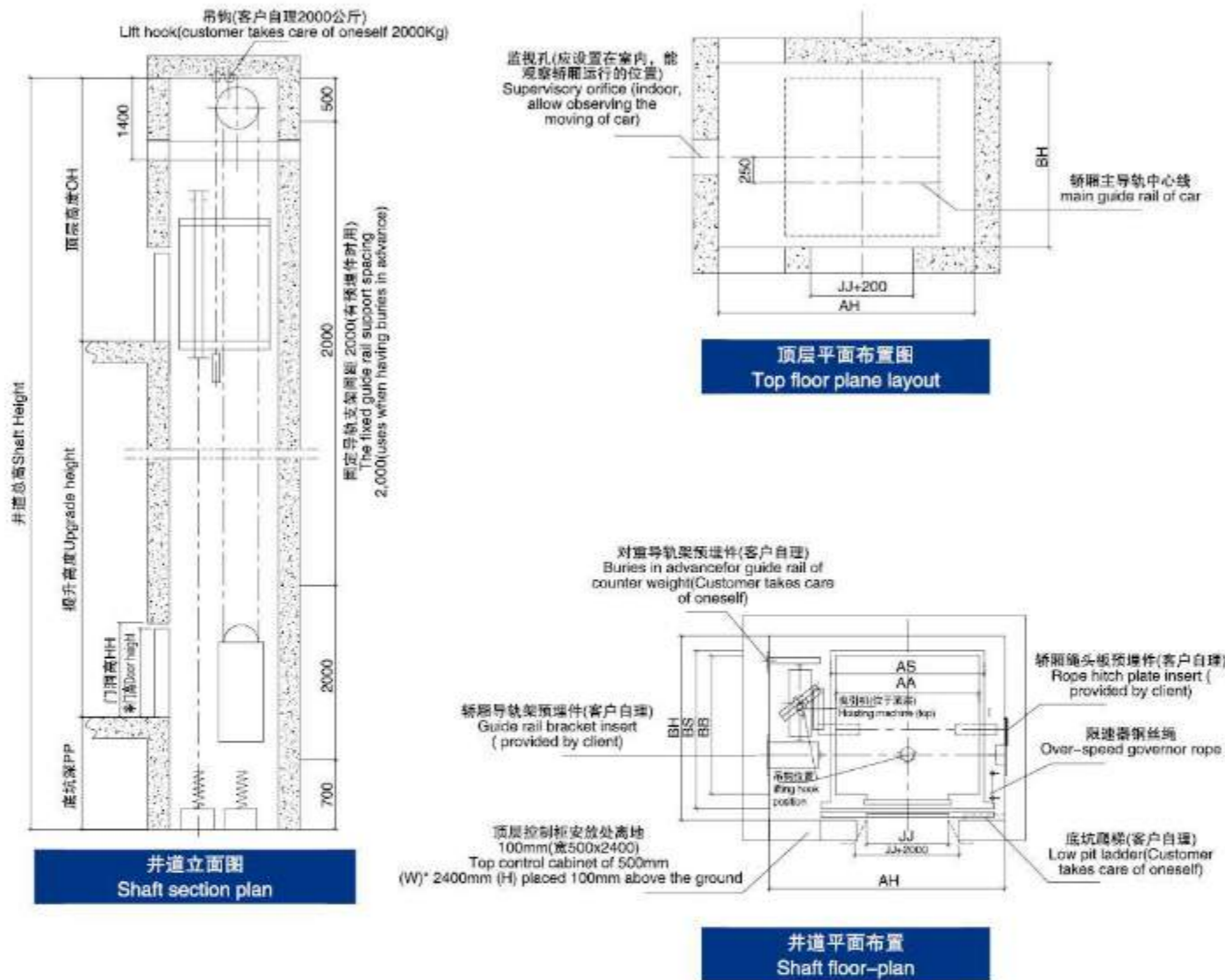
Passenger Elevator Design Table



Passenger Elevator Specifications

速度 Speed	载重量 Capacity	人数 Number of persons	轿厢内尺寸 Size Inside Car		轿厢外尺寸 Size Outside Car		井道尺寸 Well Size		机房尺寸 Machine Room Size		开门形式 Door-Opening Mode	开门宽度 Door-Opening Width	门净高 Door net Height	顶层高 Ceiling Height	底坑深 Pit Depth	机房高 Machine Room Height
			AA	BB	AS	BS	AH	BH	AM	BM						
1.0	450	6	1400	850	1500	1040	1900	1470	2100	3200	中分 Center opening	800	2100	≥4500	≥1400	≥2200
1.0	550	7	1400	1030	1500	1220	1900	1650	2100	3400	中分 Center opening	800	2100	≥4500	≥1400	≥2200
1.5, 1.75	550	7	1400	1030	1500	1220	1900	1650	3050	3400	中分 Center opening	800	2100	≥4500	≥1600	≥2200
1.0	630	8	1400	1100	1500	1290	1900	1720	2100	3600	中分 Center opening	800	2100	≥4500	≥1400	≥2200
1.5, 1.75	630	8	1400	1100	1500	1290	1900	1720	3050	3600	中分 Center opening	800	2100	≥4500	≥1600	≥2200
1.0	800	10	1400	1350	1500	1540	1900	1970	2100	3700	中分 Center opening	800	2100	≥4500	≥1400	≥2200
1.5, 1.75	800	10	1400	1350	1500	1540	1900	1970	3050	3700	中分 Center opening	800	2100	≥4500	≥1600	≥2200
2.0, 2.5	800	10	1400	1350	1500	1540	2000	2050	3500	4500	中分 Center opening	800	2100	≥5200	≥2200	≥2800
3.0	800	10	1400	1350	1500	1540	2000	2050	4000	4500	中分 Center opening	800	2100	≥5400	≥2600	≥2800
1.0	900	12	1600	1350	1700	1540	2200	1970	2400	4100	中分 Center opening	900	2100	≥4500	≥1400	≥2200
1.5, 1.75	900	12	1600	1350	1700	1540	2200	1970	3250	3900	中分 Center opening	900	2100	≥4500	≥1600	≥2200
2.0, 2.5	900	12	1600	1350	1700	1540	2200	2050	3500	4500	中分 Center opening	900	2100	≥5200	≥2200	≥2800
3.0	900	12	1600	1350	1700	1540	2200	2050	4000	4500	中分 Center opening	900	2100	≥5400	≥2600	≥2800
1.0	1000	13	1600	1500	1700	1690	2200	2120	2400	4200	中分 Center opening	900	2100	≥4500	≥1400	≥2200
1.5, 1.75	1000	13	1600	1500	1700	1690	2200	2120	3250	4000	中分 Center opening	900	2100	≥4500	≥1600	≥2200
2.0, 2.5	1000	13	1600	1500	1700	1690	2200	2200	4000	4500	中分 Center opening	900	2100	≥5200	≥2200	≥2800
3.0	1000	13	1600	1500	1700	1690	2200	2200	4500	4500	中分 Center opening	900	2100	≥5400	≥2600	≥2800
1.0	1150	15	2000	1350	2100	1540	2600	2100	3250	4200	中分 Center opening	1100	2100	≥4500	≥1500	≥2500
1.5, 1.75	1150	15	2000	1350	2100	1540	2600	2100	3250	4200	中分 Center opening	1100	2100	≥4700	≥1700	≥2500
2.0, 2.5	1150	15	2000	1350	2100	1540	2600	2100	4000	4500	中分 Center opening	1100	2100	≥5200	≥2200	≥3000
3.0	1150	15	2000	1350	2100	1540	2600	2100	4500	5000	中分 Center opening	1100	2100	≥5500	≥2600	≥3000
1.0	1350	18	2000	1500	2100	1690	2600	2250	3250	4350	中分 Center opening	1100	2100	≥4500	≥1600	≥2800
1.5, 1.75	1350	18	2000	1500	2100	1690	2600	2250	3250	4350	中分 Center opening	1100	2100	≥4700	≥1700	≥2800
2.0, 2.5	1350	18	2000	1500	2100	1690	2600	2250	4000	4500	中分 Center opening	1100	2100	≥5200	≥2200	≥3000
3.0	1350	18	2000	1500	2100	1690	2600	2250	4500	5000	中分 Center opening	1100	2100	≥5400	≥2600	≥3000
1.0	1600	21	2000	1750	2100	1940	2600	2500	3250	4350	中分 Center opening	1100	2100	≥4700	≥1700	≥2800
1.5, 1.75	1600	21	2000	1750	2100	1940	2600	2500	4000	4500	中分 Center opening	1100	2100	≥4800	≥1800	≥2800
2.0, 2.5	1600	21	2000	1750	2100	1940	2600	2500	4500	5000	中分 Center opening	1100	2100	≥5200	≥2200	≥3000
3.0	1600	21	2000	1750	2100	1940	2600	2500	4500	5000	中分 Center opening	1100	2100	≥5400	≥2600	≥3000

Passenger Elevator Machine No

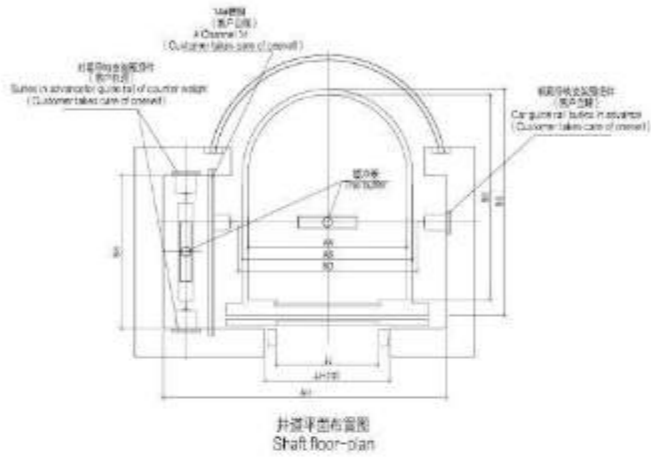


Passenger Elevator Machine No Room Specifications

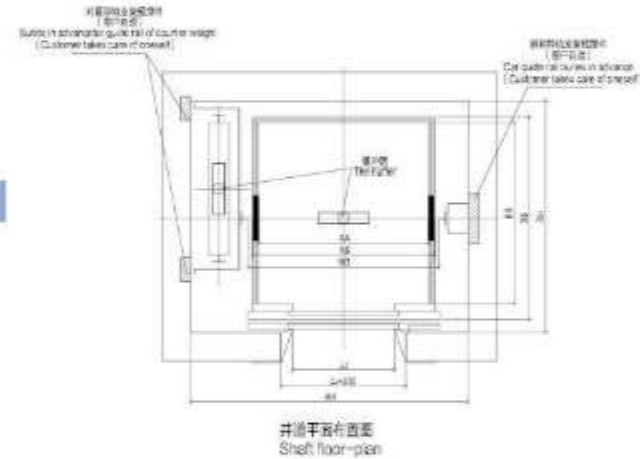
速度 Speed (m/s)	载重量 Weight Capacity (kg)	人数 Number of persons	轿厢内尺寸 Inner car dimension		轿厢外尺寸 Outer car dimension		井道尺寸 Shaft dimension		开门形式 opening	开门宽度 Opening width	门净高 Door net height	顶层高 Headroom height	底坑深 Pit Depth
			宽 AA	深 BB	宽 AS	深 BS	宽 AH	深 BH					
1.0	630	8	1400	1100	1500	1290	2300	1600	中分 Center opening	JJ	HH	OH	PP
1.5	630	8	1400	1100	1500	1290	2300	1600	中分 Center opening	800	2100	≥4100	≥1600
1.75	630	8	1400	1100	1500	1290	2300	1600	中分 Center opening	800	2100	≥4300	≥1750
1.0	800	10	1400	1350	1500	1540	2300	1800	中分 Center opening	800	2100	≥4100	≥1600
1.5	800	10	1400	1350	1500	1540	2300	1800	中分 Center opening	800	2100	≥4200	≥1650
1.75	800	10	1400	1350	1500	1540	2300	1800	中分 Center opening	800	2100	≥4300	≥1750
1.0	1000	13	1500	1600	1600	1790	2400	2050	中分 Center opening	900	2100	≥4100	≥1600
1.5	1000	13	1500	1600	1600	1790	2400	2050	中分 Center opening	900	2100	≥4200	≥1650
1.75	1000	13	1500	1600	1600	1790	2400	2050	中分 Center opening	900	2100	≥4300	≥1750

说明: 井道偏差允许 0~+50 (单位: mm)
Explain: Allowable Well Size deviation 0~+50(unit:mm)

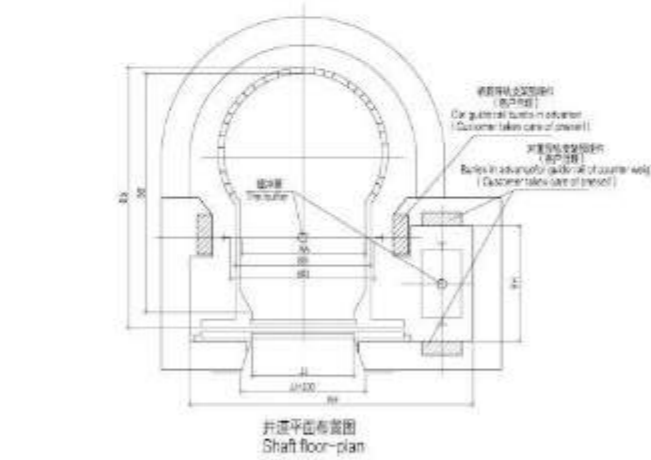
Construction dimension of sightseeing elevator



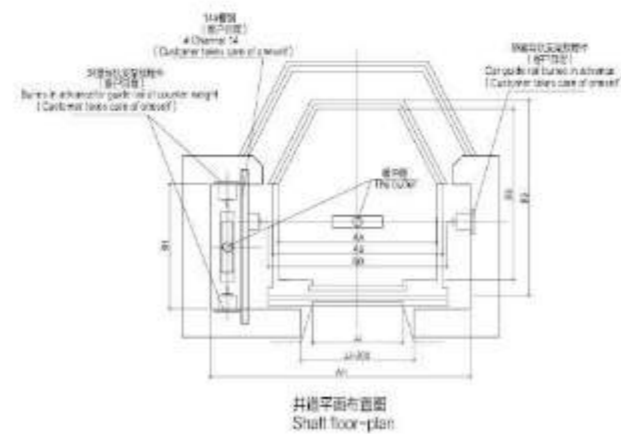
< 180° 圆形观光梯井平



< 240° 圆形观光梯井平



菱形观光梯井平



方形观光梯井平

Construction dimension of 240° round sightseeing elevators

形状 Shape	速度 Speed (m/s)	载重量 Weight capacity (kg)	人数 Number of persons	轿厢内尺寸 Inner car dimension		轿厢外尺寸 Outer car dimension		井道尺寸 Shaft dimension		开门形式 Opening	开门宽度 Opening width JJ	门净高 Door net height HH	顶层高 Headroom height OH	底坑深 Pit depth PP
				宽 AA	深 BB	宽 AS	深 BS	宽 AH	深 BH					
圆形 / Round	1.0	800	10	1000	1900	1100	2090	2400	1015	中分 Center opening	800	2100	≥ 4800	≥ 2000
圆形 / Round	1.5	800	10	1000	1900	1100	2090	2400	1015	中分 Center opening	800	2100	≥ 5000	≥ 2000
圆形 / Round	1.75	800	10	1000	1900	1100	2090	2400	1015	中分 Center opening	800	2100	≥ 5000	≥ 2000
圆形 / Round	1.0	1000	13	1100	2110	1200	2300	2500	1015	中分 Center opening	800	2100	≥ 4800	≥ 2000
圆形 / Round	1.5	1000	13	1100	2110	1200	2300	2500	1015	中分 Center opening	800	2100	≥ 5000	≥ 2000
圆形 / Round	1.75	1000	13	1100	2110	1200	2300	2500	1015	中分 Center opening	800	2100	≥ 5000	≥ 2000

Construction dimension of 180° round sightseeing elevators

形状 Shape	速度 Speed (m/s)	载重量 Weight capacity (kg)	人数 Number of persons	轿厢内尺寸 Inner car dimension		轿厢外尺寸 Outer car dimension		井道尺寸 Shaft dimension		开门形式 Opening	开门宽度 Opening width JJ	门净高 Door net height HH	顶层高 Headroom height OH	底坑深 Pit depth PP
				宽 AA	深 BB	宽 AS	深 BS	宽 AH	深 BH					
圆形 / Round	1.0	630	8	1100	1610	1200	1800	2250	1250	中分 Center opening	800	2100	≥ 4800	≥ 2000
圆形 / Round	1.5	630	8	1100	1610	1200	1800	2250	1250	中分 Center opening	800	2100	≥ 5000	≥ 2000
圆形 / Round	1.75	630	8	1100	1610	1200	1800	2250	1250	中分 Center opening	800	2100	≥ 5000	≥ 2000
圆形 / Round	1.0	800	10	1300	1710	1400	1900	2350	1300	中分 Center opening	800	2100	≥ 4800	≥ 2000
圆形 / Round	1.5	800	10	1300	1710	1400	1900	2350	1300	中分 Center opening	800	2100	≥ 5000	≥ 2000
圆形 / Round	1.75	800	10	1300	1710	1400	1900	2350	1300	中分 Center opening	800	2100	≥ 5000	≥ 2000
圆形 / Round	1.0	1000	13	1400	1810	1500	2000	2500	1355	中分 Center opening	900	2100	≥ 4800	≥ 2000
圆形 / Round	1.5	1000	13	1400	1810	1500	2000	2500	1355	中分 Center opening	900	2100	≥ 5000	≥ 2000
圆形 / Round	1.75	1000	13	1400	1810	1500	2000	2500	1355	中分 Center opening	900	2100	≥ 5000	≥ 2000

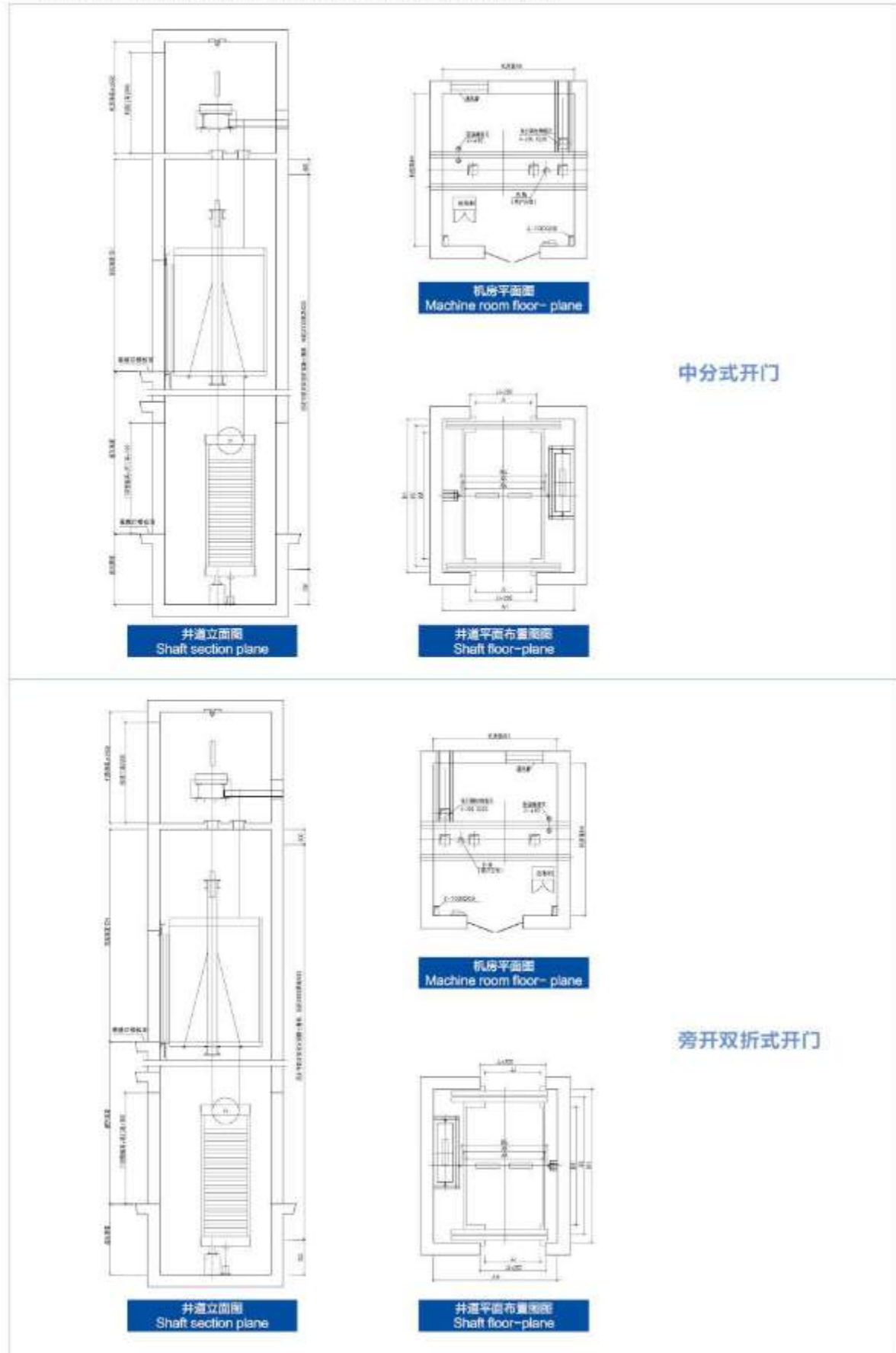
Construction dimension of diamond sightseeing elevators

形状 Shape	速度 Speed (m/s)	载重量 Weight capacity (kg)	人数 Number of persons	轿厢内尺寸 Inner car dimension		轿厢外尺寸 Outer car dimension		井道尺寸 Shaft dimension		开门形式 Opening	开门宽度 Opening width JJ	门净高 Door net height HH	顶层高 Headroom height OH	底坑深 Pit depth PP
				宽 AA	深 BB	宽 AS	深 BS	宽 AH	深 BH					
菱形 / Diamond	1.0	630	8	1300	1410	1400	1630	2200	1050	中分 Center opening	800	2100	≥ 4800	≥ 2000
菱形 / Diamond	1.5	630	8	1300	1410	1400	1630	2200	1050	中分 Center opening	800	2100	≥ 5000	≥ 2000
菱形 / Diamond	1.75	630	8	1300	1410	1400	1630	2200	1050	中分 Center opening	800	2100	≥ 5000	≥ 2000
菱形 / Diamond	1.0	800	10	1400	1510	1500	1730	2300	1100	中分 Center opening	800	2100	≥ 4800	≥ 2000
菱形 / Diamond	1.5	800	10	1400	1510	1500	1730	2300	1100	中分 Center opening	800	2100	≥ 5000	≥ 2000
菱形 / Diamond	1.75	800	10	1400	1510	1500	1730	2300	1100	中分 Center opening	800	2100	≥ 5000	≥ 2000
菱形 / Diamond	1.0	1000	13	1500	1600	1600	1800	2400	2050	中分 Center opening	900	2100	≥ 4800	≥ 2000
菱形 / Diamond	1.5	1000	13	1500	1600	1600	1800	2400	2050	中分 Center opening	900	2100	≥ 5000	≥ 2000
菱形 / Diamond	1.75	1000	13	1500	1600	1600	1800	2400	2050	中分 Center opening	900	2100	≥ 5000	≥ 2000

Construction dimension of square sightseeing elevators

形状 Shape	速度 Speed (m/s)	载重量 Weight capacity (kg)	人数 Number of persons	轿厢内尺寸 Inner car dimension		轿厢外尺寸 Outer car dimension		井道尺寸 Shaft dimension		开门形式 Opening	开门宽度 Opening width JJ	门净高 Door net height HH	顶层高 Headroom height OH	底坑深 Pit depth PP
				宽 AA	深 BB	宽 AS	深 BS	宽 AH	深 BH					
方型 / Square	1.0	630	8	1400	1100	1500	1290	2300	1600	中分 Center opening	800	2100	≥ 4800	≥ 2000
方型 / Square	1.5	630	8	1400	1100	1500	1290	2300	1600	中分 Center opening	800	2100	≥ 5000	≥ 2000
方型 / Square	1.75	630	8	1400	1100	1500	1290	2300	1600	中分 Center opening	800	2100	≥ 5000	≥ 2000
方型 / Square	1.0	800	10	1400	1350	1500	1540	2300	1800	中分 Center opening	800	2100	≥ 4800	≥ 2000
方型 / Square	1.5	800	10	1400	1350	1500	1540	2300	1800	中分 Center opening	800	2100	≥ 5000	≥ 2000
方型 / Square	1.75	800	10	1400	1350	1500	1540	2300	1800	中分 Center opening	800	2100	≥ 5000	≥ 2000
方型 / Square	1.0	1000	13	1500	1600	1600	1790	2450	2050	中分 Center opening	900	2100	≥ 4800	≥ 2000
方型 / Square	1.5	1000	13	1500	1600	1600	1790	2450	2050	中分 Center opening	900	2100	≥ 5000	≥ 2000
方型 / Square	1.75	1000	13	1500	1600	1600	1790	2450	2050	中分 Center opening	900	2100	≥ 5000	≥ 2000

医用电梯土建尺寸 Construction dimension of bed elevator



中分门和中分双折门电梯参数表

速度 Speed (m/s)	载重量 Weight capacity (kg)	人数 Number of persons	轿厢内尺寸 In-ter car dimension		轿厢 (单开门/双开门)	井道尺寸 Shaft dimension		开门形式 Opening	开门宽度 Opening width J-J	门净高 Door net height H-H	顶层高 Headroom height OH	基坑深 Pit depth PP
			宽	深		宽	深					
1.0	1600	21	1500	2350	单开	2450	2800	中分开门	1000	2100	≥ 4500	≥ 1500
1.0	1600	21	1500	2350	贯通	2450	2870	中分开门	1000	2100	≥ 4500	≥ 1500
1.0	1600	21	1500	2350	单开	2450	2900	中分双折	1200	2100	≥ 4500	≥ 1500
1.0	1600	21	1500	2350	贯通	2450	3050	中分双折	1200	2100	≥ 4500	≥ 1500
1.5	1600	21	1500	2350	单开	2450	2800	中分开门	1000	2100	≥ 4600	≥ 1600
1.5	1600	21	1500	2350	贯通	2450	2870	中分开门	1000	2100	≥ 4600	≥ 1600
1.5	1600	21	1500	2350	单开	2450	2900	中分双折	1200	2100	≥ 4600	≥ 1600
1.5	1600	21	1500	2350	贯通	2450	3050	中分双折	1200	2100	≥ 4600	≥ 1600
1.75	1600	21	1500	2350	单开	2450	2800	中分开门	1000	2100	≥ 4600	≥ 1600
1.75	1600	21	1500	2350	贯通	2450	2870	中分开门	1000	2100	≥ 4600	≥ 1600
1.75	1600	21	1500	2350	单开	2450	2900	中分双折	1200	2100	≥ 4600	≥ 1600
1.75	1600	21	1500	2350	贯通	2450	3050	中分双折	1200	2100	≥ 4600	≥ 1600
2.0	1600	21	1500	2350	单开	2450	2800	中分开门	1000	2100	≥ 4800	≥ 1800
2.0	1600	21	1500	2350	贯通	2450	2870	中分开门	1000	2100	≥ 4800	≥ 1800
2.0	1600	21	1500	2350	单开	2450	2900	中分双折	1200	2100	≥ 4800	≥ 1800
2.0	1600	21	1500	2350	贯通	2450	3050	中分双折	1200	2100	≥ 4800	≥ 1800
2.5	1600	21	1500	2350	单开	2450	2800	中分开门	1000	2100	≥ 5200	≥ 2200
2.5	1600	21	1500	2350	贯通	2450	2870	中分开门	1000	2100	≥ 5200	≥ 2200
2.5	1600	21	1500	2350	单开	2450	2900	中分双折	1200	2100	≥ 5200	≥ 2200
2.5	1600	21	1500	2350	贯通	2450	3050	中分双折	1200	2100	≥ 5200	≥ 2200

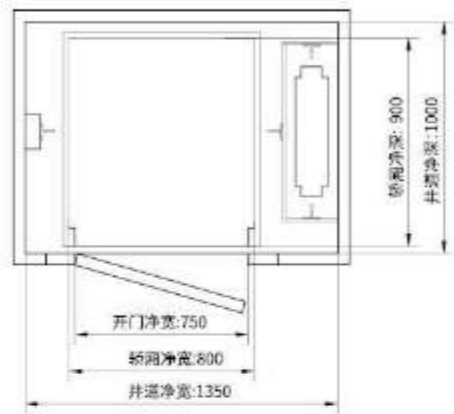
旁开双折门电梯参数表

速度 Speed (m/s)	载重量 Weight capacity (kg)	人数 Number of persons	轿厢内尺寸 In-ter car dimension		轿厢 (单开门/双开门)	井道尺寸 Shaft dimension		开门形式 Opening	开门宽度 Opening width J-J	门净高 Door net height H-H	顶层高 Headroom height OH	基坑深 Pit depth PP
			宽	深		宽	深					
1.0	1600	21	1500	2350	单开	2400	2900	旁开双折门	1100	2100	≥ 4500	≥ 1500
1.0	1600	21	1500	2350	贯通	2400	3050	旁开双折门	1100	2100	≥ 4500	≥ 1500
1.0	1600	21	1500	2350	单开	2400	2900	旁开双折门	1200	2100	≥ 4500	≥ 1500
1.0	1600	21	1500	2350	贯通	2400	3050	旁开双折门	1200	2100	≥ 4500	≥ 1500
1.5	1600	21	1500	2350	单开	2400	2900	旁开双折门	1100	2100	≥ 4600	≥ 1600
1.5	1600	21	1500	2350	贯通	2400	3050	旁开双折门	1100	2100	≥ 4600	≥ 1600
1.5	1600	21	1500	2350	单开	2400	2900	旁开双折门	1200	2100	≥ 4600	≥ 1600
1.5	1600	21	1500	2350	贯通	2400	3050	旁开双折门	1200	2100	≥ 4600	≥ 1600
1.75	1600	21	1500	2350	单开	2400	2900	旁开双折门	1100	2100	≥ 4600	≥ 1600
1.75	1600	21	1500	2350	贯通	2400	3050	旁开双折门	1100	2100	≥ 4600	≥ 1600
1.75	1600	21	1500	2350	单开	2400	2900	旁开双折门	1200	2100	≥ 4600	≥ 1600
1.75	1600	21	1500	2350	贯通	2400	3050	旁开双折门	1200	2100	≥ 4600	≥ 1600
2.0	1600	21	1500	2350	单开	2400	2900	旁开双折门	1100	2100	≥ 4800	≥ 1800
2.0	1600	21	1500	2350	贯通	2400	3050	旁开双折门	1100	2100	≥ 4800	≥ 1800
2.0	1600	21	1500	2350	单开	2400	2900	旁开双折门	1200	2100	≥ 4800	≥ 1800
2.0	1600	21	1500	2350	贯通	2400	3050	旁开双折门	1200	2100	≥ 4800	≥ 1800
2.5	1600	21	1500	2350	单开	2400	2900	旁开双折门	1100	2100	≥ 5200	≥ 2200
2.5	1600	21	1500	2350	贯通	2400	3050	旁开双折门	1100	2100	≥ 5200	≥ 2200
2.5	1600	21	1500	2350	单开	2400	2900	旁开双折门	1200	2100	≥ 5200	≥ 2200
2.5	1600	21	1500	2350	贯通	2400	3050	旁开双折门	1200	2100	≥ 5200	≥ 2200

Layout specifications and dimensions

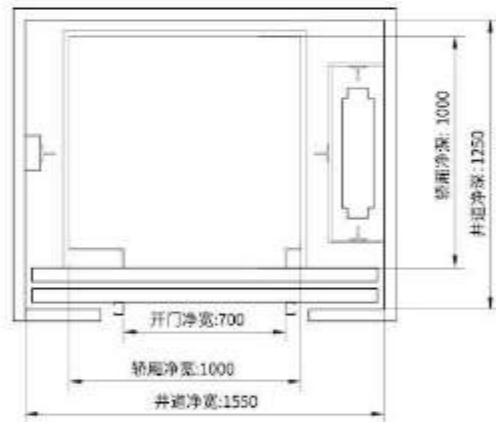
备注：标准层高 3 米，所有井道尺寸均为最小值
Note: Standard floor height is 3m

MD-PJ-PD



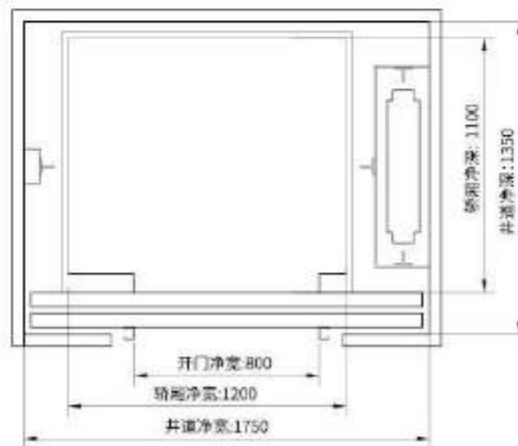
3 人 / 260 公斤

井道尺寸: HW×HD 1350×1000
轿厢尺寸: CW×CD, OP 800×900, 750



4 人 / 320 公斤

井道尺寸: HW×HD 1550×1250
轿厢尺寸: CW×CD, OP 1000×1000, 700



5 人 / 400 公斤

井道尺寸: HW×HD 1750×1350
轿厢尺寸: CW×CD, OP 1200×1100, 800



MD-PJ-PD

载重: 260kg, 320kg, 400kg
速度: 0.4m/s
轿厢高度: 2100mm
开门高度: 2000mm
顶层高度: ≥ 2800mm
底坑深度: ≥ 150mm

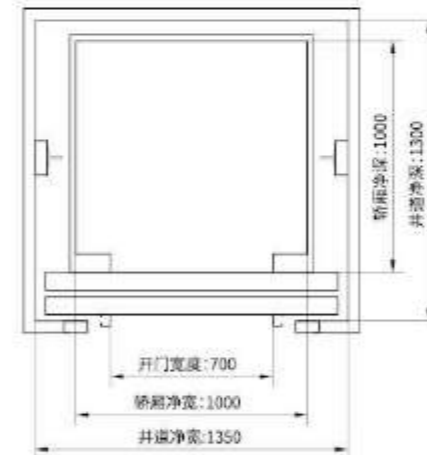
注：本样本所示图纸及规格参数仅供参考，订货请与公司确认。
Note: the drawings and specifications shown on sample are only for your reference, any order please confirm with glarie company.

MD-PJ-TD



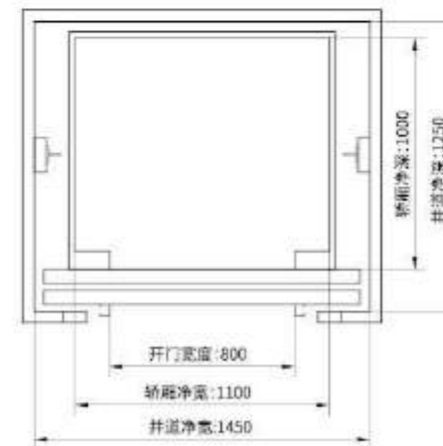
3 人 / 260 公斤

井道尺寸: HW×HD 1150×1000
轿厢尺寸: CW×CD, OP 800×900, 750



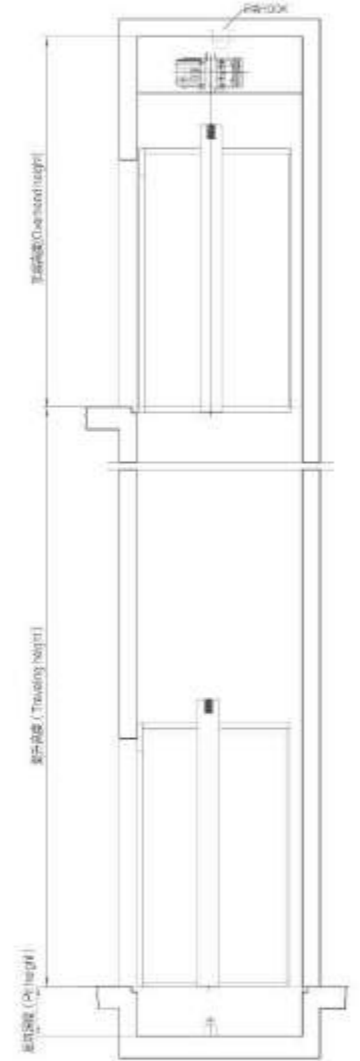
4 人 / 320 公斤

井道尺寸: HW×HD 1350×1300
轿厢尺寸: CW×CD, OP 1000×1000, 700



5 人 / 400 公斤

井道尺寸: HW×HD 1450×1250
轿厢尺寸: CW×CD, OP 1100×1000, 800



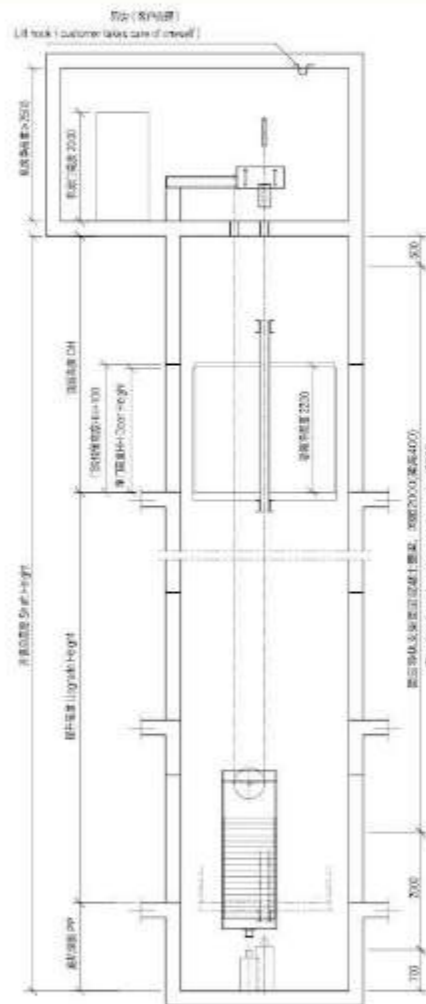
MD-PJ-TD

载重: 260kg, 320kg, 400kg
速度: 0.3m/s
轿厢高度: 2100mm
开门高度: 2000mm
顶层高度: ≥ 3400mm
底坑深度: ≥ 150mm

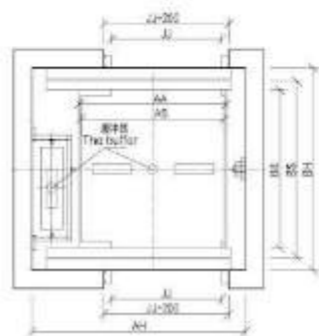
注：本样本所示图纸及规格参数仅供参考，订货请与公司确认。
Note: the drawings and specifications shown on sample are only for your reference, any order please confirm with glarie company.

Construction dimension of freight elevator

MD standard machine room freight elevator construction dimension

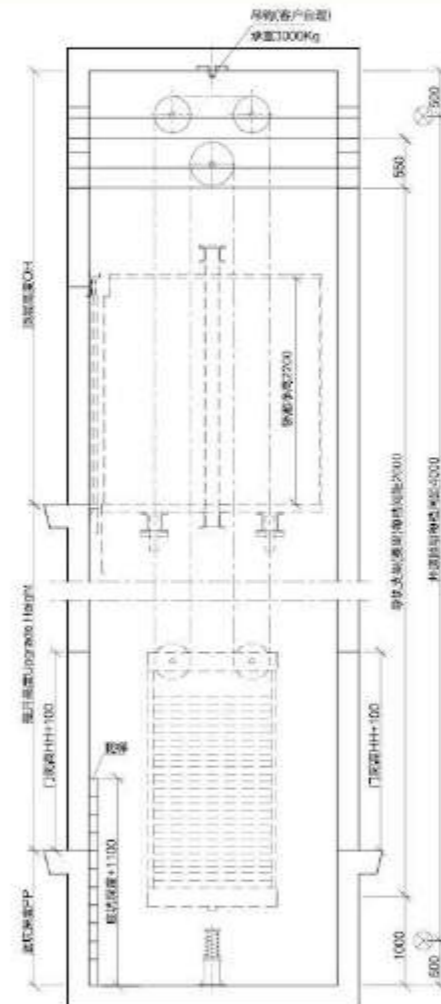


井道立面图
Shaft section plan

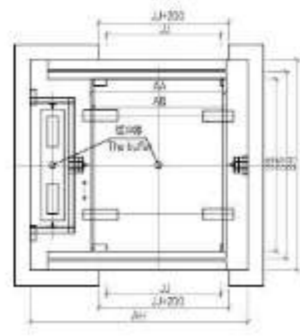


井道平面图
Shaft floor-plan

MD standard machine roomless freight elevator construction dimension



井道立面图
Shaft section plan



井道平面图
Shaft floor-plan

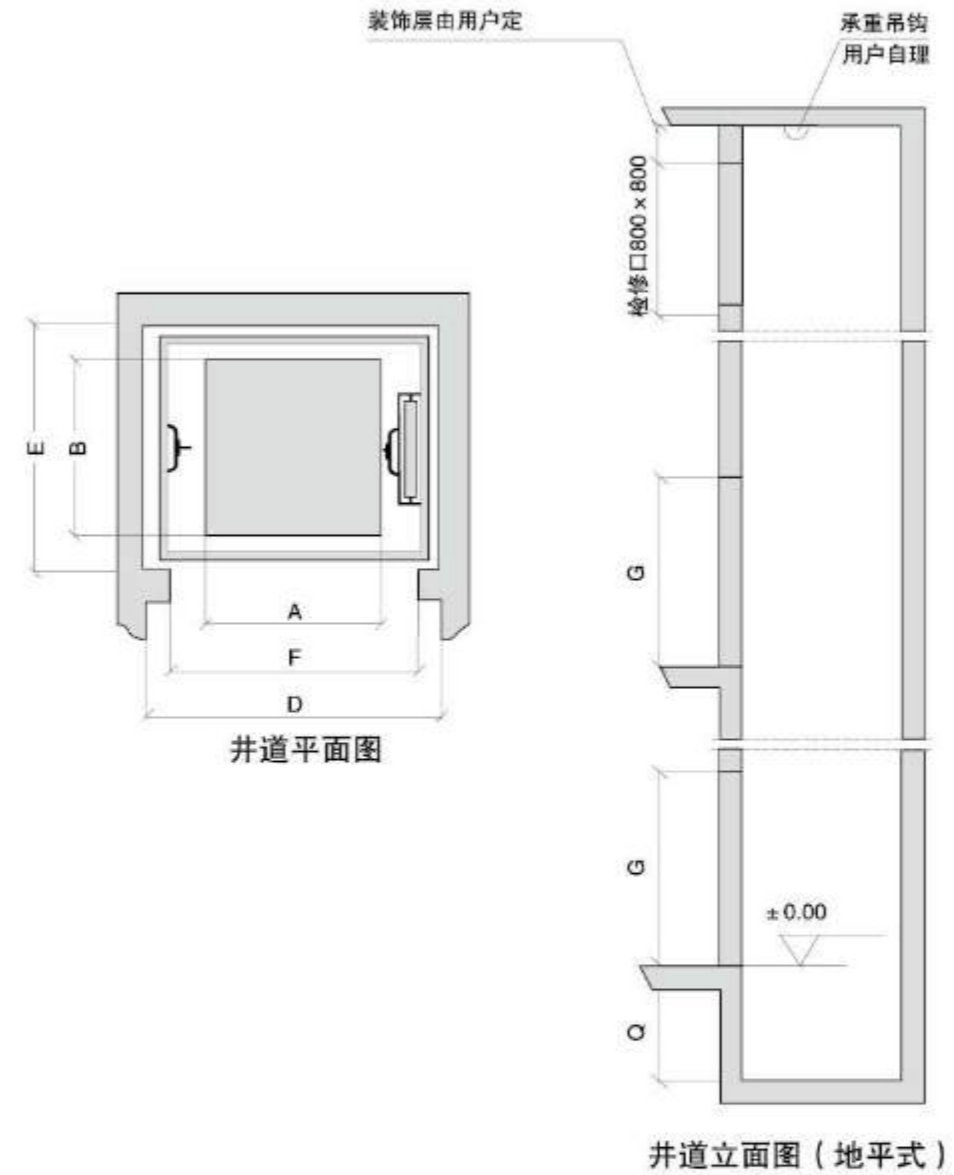
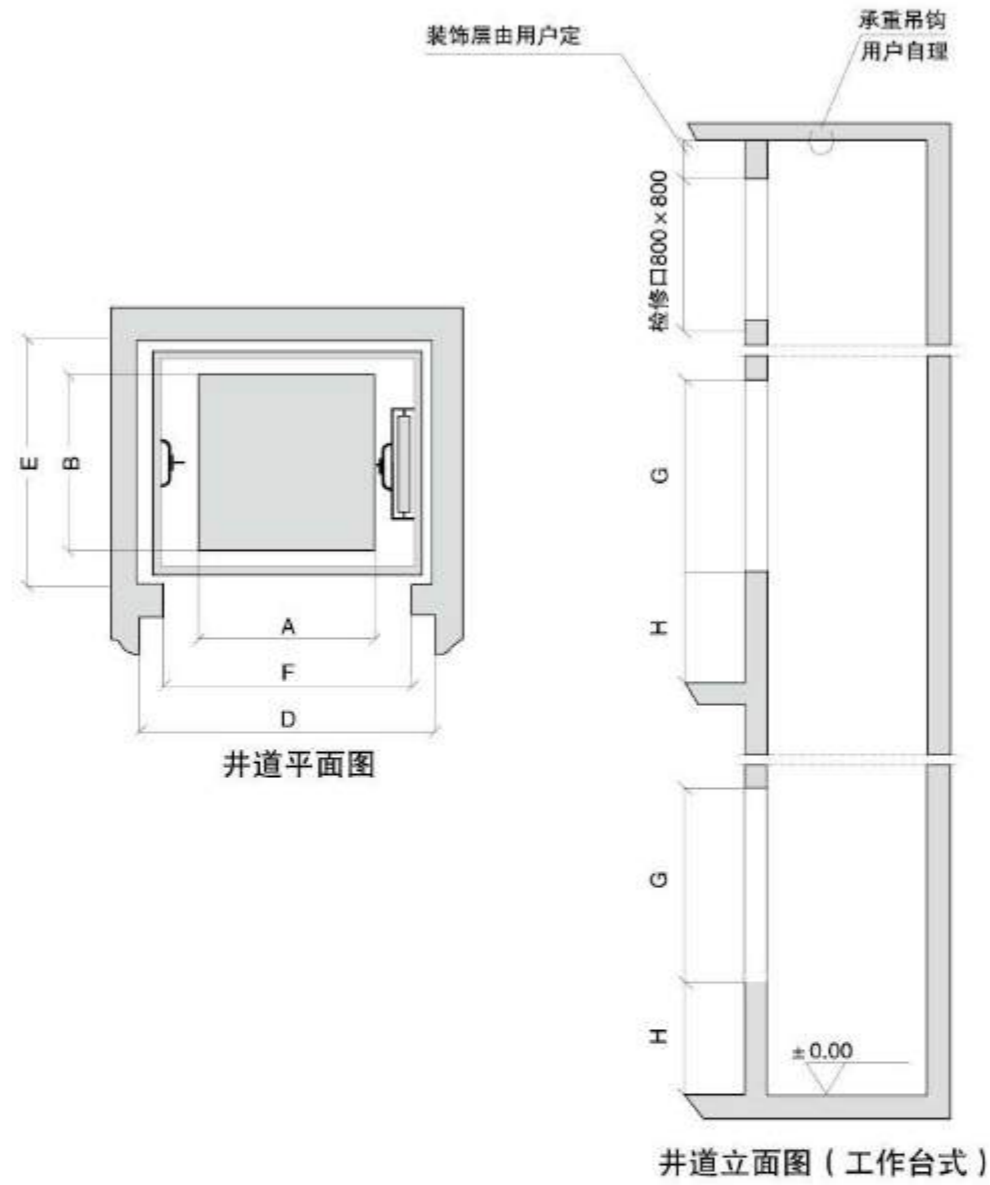
MD standard machine room freight elevator

速度 Speed (m/s)	载重量 Weight capacity (kg)	轿厢内尺寸 Inner car dimension	轿厢外尺寸 Outer car dimension	井道尺寸 Shaft dimension	轿厢 (单开门/ 贯通门)	开门形式 Opening	开门宽度 Opening width	开门高度 Door net height	轿厢 净高度 car height	顶层高度 (最小) Headroom height	底坑深 Pit depth
		宽×深 AA×BB	宽×深 AS×BS	宽×深 AH×BH		旁开双折/ 中分双折	JJ	HH		OH	PP
0.5	1000	1500x1600	1560x1726	2400x2100	单开门	旁开双折	1100	2100	2200	4200	1500
0.5	1000	1300x1800	1360x1992	2200x2320	贯通门	旁开双折	1100	2100	2200	4200	1500
0.5	1000	1500x1600	1560x1726	2480x2100	单开门	中分双折	1200	2100	2200	4200	1500
0.5	1000	1300x1800	1360x1992	2400x2320	贯通门	中分双折	1200	2100	2200	4200	1500
0.5	1600	1840x1930	1900x2056	2750x2350	单开门	旁开双折	1400	2100	2200	4200	1500
0.5	1600	1700x2100	1760x2292	2650x2620	贯通门	旁开双折	1400	2100	2200	4200	1500
0.5	1600	1840x1930	1900x2056	2800x2350	单开门	中分双折	1400	2100	2200	4200	1500
0.5	2000	1700x2100	1760x2292	2800x2620	贯通门	中分双折	1400	2100	2200	4200	1500
0.5	2000	1940x2174	2000x2300	2900x2650	单开门	旁开双折	1500	2100	2200	4200	1500
0.5	2000	1840x2308	1900x2500	2800x2820	贯通门	旁开双折	1500	2100	2200	4200	1500
0.5	2000	1940x2174	2000x2300	3000x2650	单开门	中分双折	1500	2100	2200	4200	1500
0.5	2000	1840x2308	1900x2500	2850x2820	贯通门	中分双折	1500	2100	2200	4200	1500
0.5	3000	2240x2580	2300x2706	3300x3050	单开门	旁开双折	1800	2100	2200	4200	1500
0.5	3000	2240x2580	2300x2772	3300x3100	贯通门	旁开双折	1800	2100	2200	4200	1500
0.5	3000	2440x2400	2500x2526	3550x2850	单开门	中分双折	1800	2100	2200	4200	1500
0.5	3000	2100x2750	2160x2942	3400x3270	贯通门	中分双折	1800	2100	2200	4200	1500
0.25~1.0	3200	2100x2750	2160x2876	3400x3450	单开门	中分双折	1800	2100	2200	4200	1500
0.5	5000	2500x3600	2560x3726	4100x4100	单开门	中分双折	2400	2300	2400	5000	1600
0.5	5000	2500x3600	2560x3792	4100x4120	贯通门	中分双折	2400	2300	2400	5000	1600

MD standard machine roomless freight elevator

速度 Speed (m/s)	载重量 Weight capacity (kg)	轿厢内尺寸 Inner car dimension	轿厢外尺寸 Outer car dimension	井道尺寸 Shaft dimension	轿厢 (单开门/ 贯通门)	开门形式 Opening	开门宽度 Opening width	开门高度 Door net height	轿厢 净高度 car height	顶层高度 (最小) Headroom height	底坑深 Pit depth
		宽×深 AA×BB	宽×深 AS×BS	宽×深 AH×BH		旁开双折/ 中分双折	JJ	HH		OH	PP
0.5	2000	1840x2260	1900x2386	3000x2750	单开门	中分双折	1500	2100	2200	4800	1500
0.5	3000	1750x2400	1810x2592	2850x2950	贯通门	旁开双折	1500	2100	2200	4800	1500

TWJ 系列杂物电梯土建示意图



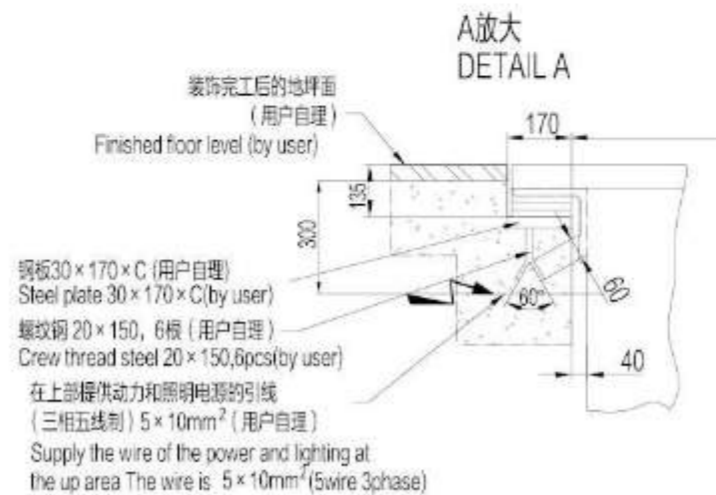
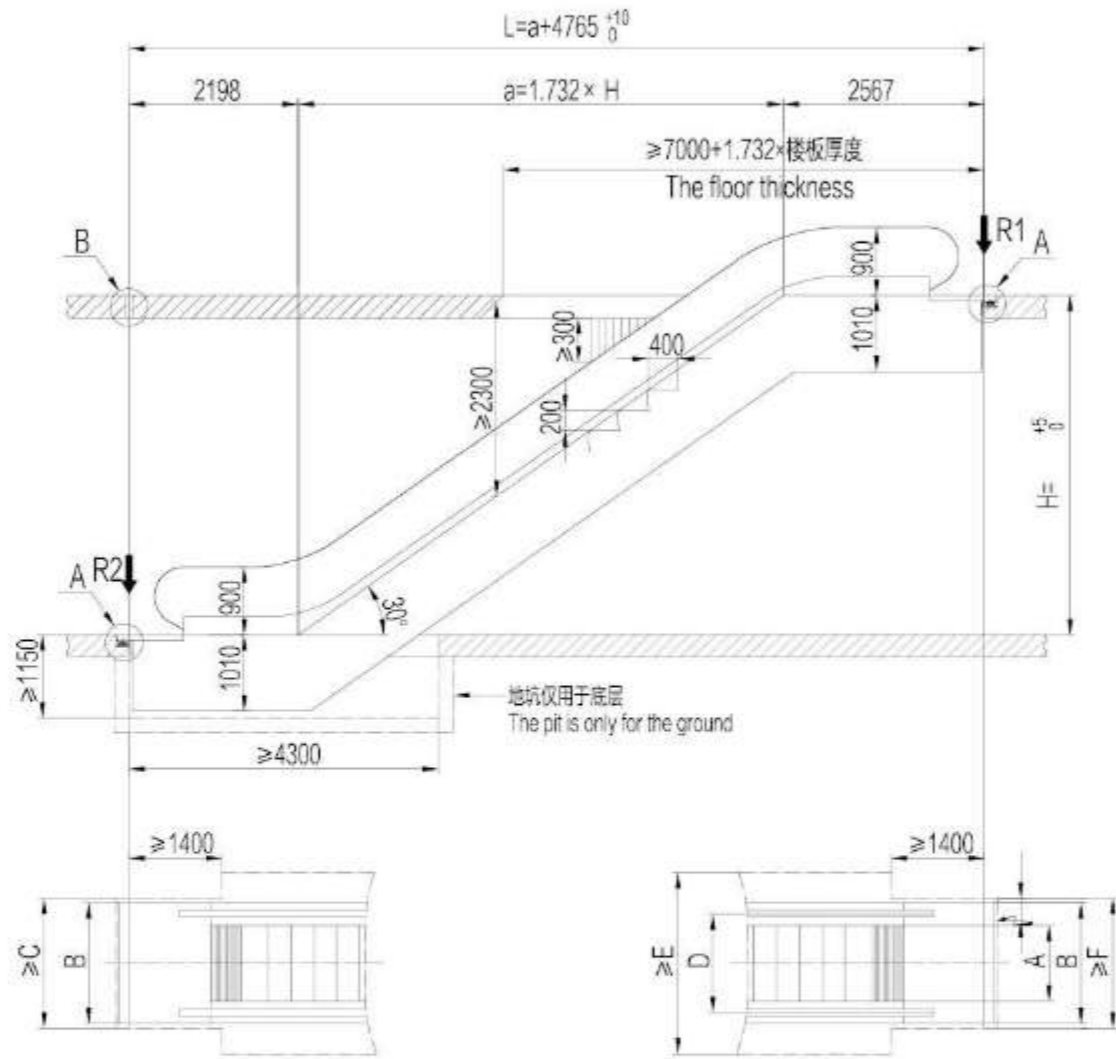
序号	规格	载重量 (kg)	种类	曳引机功率 (kw)	顶层高度	轿厢尺寸			(侧对重) 井道尺寸		(后对重) 井道尺寸		地坑深度(Q)	门口预留尺寸		
						A(宽)	B(深)	C(高)	D(宽)	E(深)	D(宽)	E(深)		F	G	H
1	TWJ100-1	100	工作台式	1.1	≥3500	600	600	800	1220	950	1080	1140	—	700	950	700
2	TWJ100-2	100	工作台式	1.1	≥3500	600	700	800	1220	1050	1080	1240	—	700	950	700
3	TWJ100-3	100	工作台式	1.1	≥3500	700	700	800	1320	1050	1180	1240	—	800	950	700
4	TWJ100-4	100	工作台式	1.1	≥3500	700	800	800	1320	1150	1180	1340	—	800	950	700
5	TWJ200-1	200	工作台式	1.5	≥3500	700	700	800	1320	1050	1180	1240	—	800	950	700
6	TWJ200-2	200	工作台式	1.5	≥3500	800	800	900	1420	1150	1280	1340	—	900	1050	700
7	TWJ200-3	200	工作台式	1.5	≥3500	800	900	1000	1420	1250	1280	1440	—	900	1150	700

土建示意图仅供参考 (The schematic drawing of civil work is for referency only)

序号	规格	载重量 (kg)	种类	曳引机功率 (kw)	顶层高度	轿厢尺寸			(侧对重) 井道尺寸		(后对重) 井道尺寸		地坑深度(Q)	门口预留尺寸		
						A(宽)	B(深)	C(高)	D(宽)	E(深)	D(宽)	E(深)		F	G	H
1	TWJ200-4	200	地平式	1.5	≥3500	900	900	1000	1520	1250	1380	1440	700	1000	1150	—
2	TWJ200-5	200	地平式	1.5	≥3500	700	1050	1170	1320	1400	1180	1590	800	800	1320	—
3	TWJ250-1	250	地平式	2.2	≥3500	900	1000	1170	1560	1380	1380	1590	800	1000	1320	—
4	TWJ300-1	300	地平式	2.2	≥3500	1000	1000	1170	1660	1380	1480	1590	800	1100	1320	—
5	TWJ300-2	300	地平式	2.2	≥3500	1000	1100	1170	1660	1480	1480	1690	800	1100	1320	—
6	TWJ400-1	400	地平式	4.5	≥3500	1000	1250	1170	1660	1630	1480	1640	800	1100	1320	—
7	TWJ500-1	500	地平式	4.5	≥3500	1000	1000	1400	1660	1380	1480	1590	1000	1100	1550	—
8	TWJ500-2	500	地平式	4.5	≥3500	1000	1250	1400	1660	1630	1480	1640	1000	1100	1550	—

土建示意图仅供参考 (The schematic drawing of civil work is for referency only)

30° Escalators Parameter Construction Layout



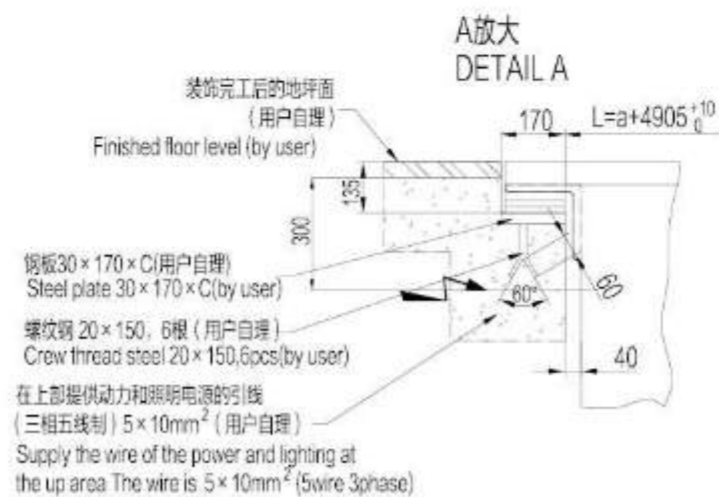
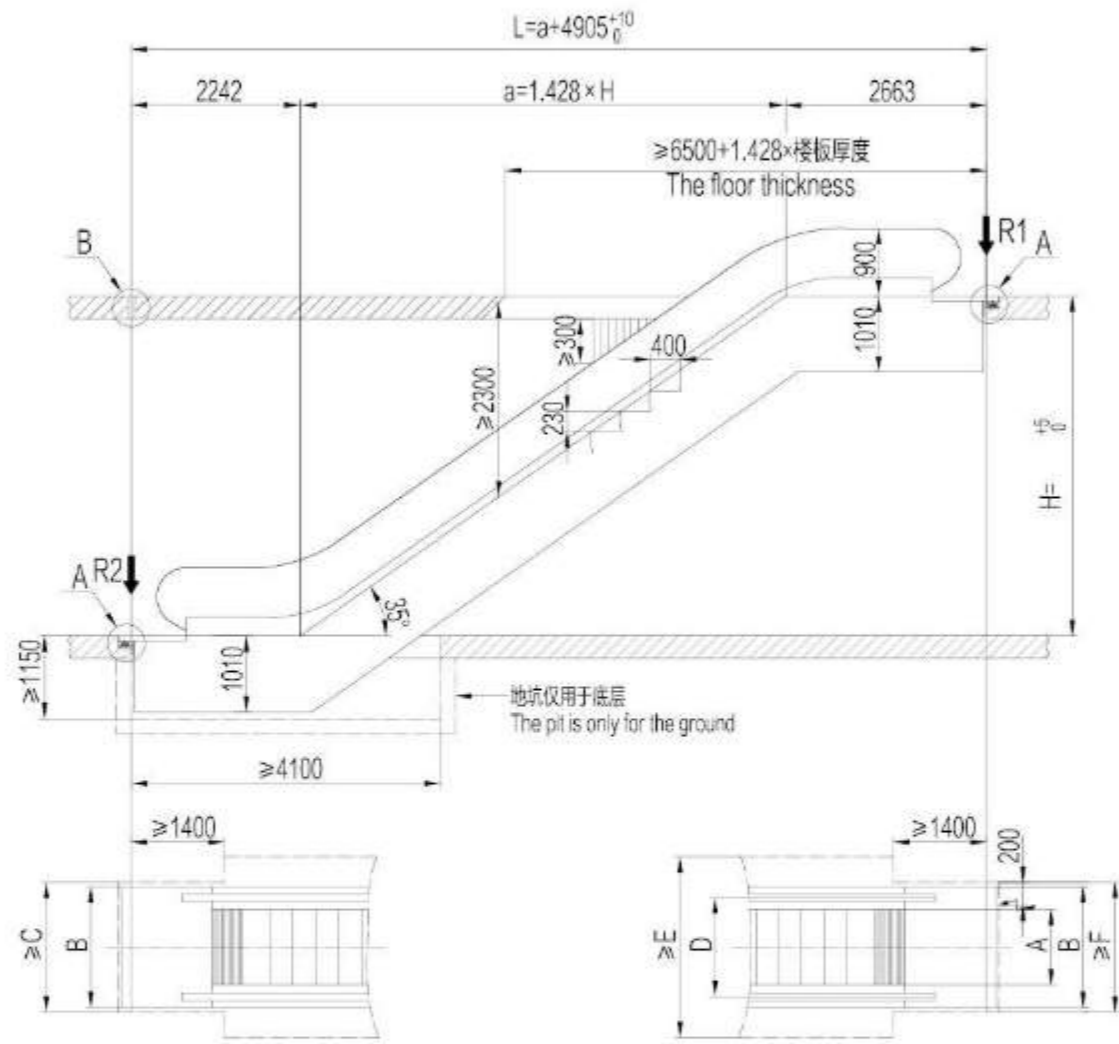
型号 Type	提升高度 Vertical rise mm	重量 Net weight KN	支持负载 Reactions R1 KN	支持负载 Reactions R2 KN	功率 Motor power KW	支持负载 Transport dimensions	
						h	i
MDWE-600 (4500man/hour)	3000	57	46	41	5.5	2750	10900
	3500	60	49	44		2780	11890
	4000	64	52	47		2810	12880
	4500	68	56	50		2830	13870
	5000	71	59	53		2840	14860
	5500	75	62	56		2860	15860
MDWE-800 (6750man/hour)	3000	59	52	47	5.5	2750	10900
	3500	63	56	50		2780	11890
	4000	67	60	54		2810	12880
	4500	71	64	57		2830	13870
	5000	74	68	60		2840	14860
	5500	82	74	66		2860	15860
MDWE-1000 (9000man/hour)	3000	63	59	53	5.5	2750	10900
	3500	67	61	57		2780	11890
	4000	71	68	61		2810	12880
	4500	75	73	65		2830	13870
	5000	83	79	71		2840	14860
	5500	87	84	75		2860	15860
	6000	92	88	79	11	2870	16850

备注: 提升高度最高能满足 < 10.44M

标准规格及尺寸 Standard specification and dimension

型号 Type		MDWE-600	MDWE-800	MDWE-1000
梯级宽度 Step Wide	A	600	800	1000
装饰宽度 Outside Cladding	B	1200	1400	1600
土建开口宽度 Construction Layout Opening Width	C	1260	1460	1660
扶手间距 Handrail Spacer	D	838	1038	1238
土建开口宽度 Construction Layout Opening Width	E	1838	2038	2238
土建开口宽度 Construction Layout Opening Width	F	1260	1460	1660

35° Escalators Parameter Construction Layout

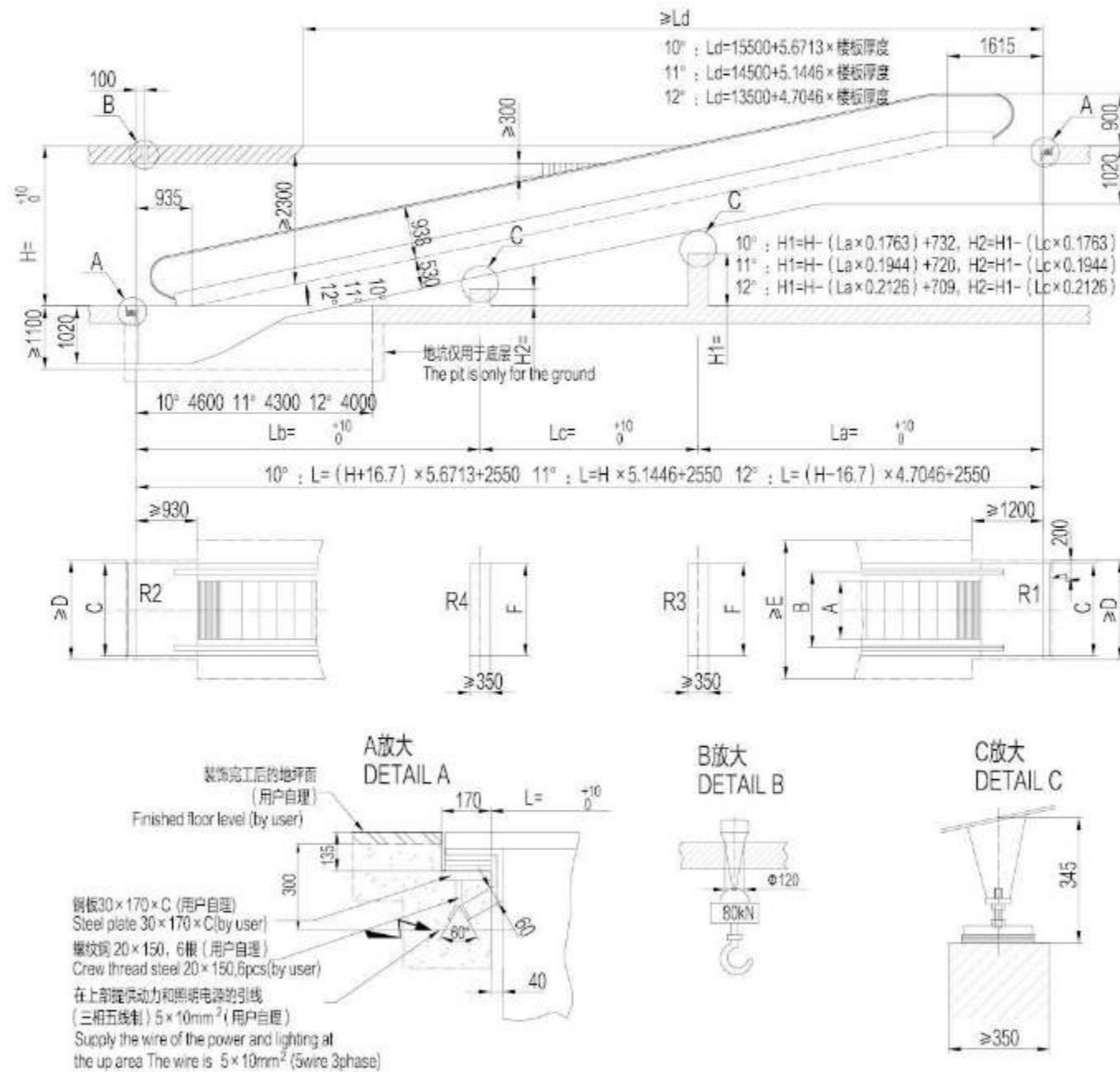


型号 Type	提升高度 Vertical rise mm	重量 Net weight KN	支撑负载 Reactions R1 KN	支撑负载 Reactions R2 KN	功率 Motor power KW	支撑负载 Transport dimensions	
						h	l
MDWE-600 (4500man/hour)	3000	54	43	39	5.5	2850	10180
	3500	57	46	41		2890	11030
	4000	60	49	44		2920	11890
	4500	64	52	46		2940	12750
	5000	67	54	49		2970	13610
	5500	70	57	51		2980	14470
MDWE-800 (6750man/hour)	6000	73	60	54	8	3000	15330
	3000	56	49	44	5.5	2850	10180
	3500	60	52	47		2890	11030
	4000	63	56	50		2920	11890
	4500	66	59	53		2940	12750
	5000	70	62	56		2970	13610
5500	73	65	59	2980		14470	
MDWE-1000 (9000man/hour)	6000	76	69	61	8	3000	15330
	3000	60	56	50	5.5	2850	10180
	3500	64	60	53		2890	11030
	4000	67	64	57		2920	11890
	4500	71	67	60		2940	12750
	5000	74	71	64		2970	13610
5500	82	77	69	2980		14470	
6000	85	81	72	11	3000	15330	

标准规格及尺寸 Standard specification and dimension

型号 Type		MDWE-600	MDWE-800	MDWE-1000
梯级宽度 Step Wide	A	600	800	1000
装饰宽度 Outside Cladding	B	1200	1400	1600
土建开口宽度 Construction Layout Opening Width	C	1260	1460	1660
扶手间距 Handrail Spacer	D	838	1038	1238
土建开口宽度 Construction Layout Opening Width	E	1838	2038	2238
土建开口宽度 Construction Layout Opening Width	F	1260	1460	1660

Moving Walk Parameter Construction Layout



倾斜角 Angle	提升高度 Rise		中间支撑 Middle supporting		La	Lb	Lc
	自 From	至 To	R3	R4			
10°	1297	2178	-	-	-	-	-
	2179	4823	1	-	L/2	L/2	-
	4824	6000	1	1	L/3	L/3	L/3
11°	1449	2420	-	-	-	-	-
	2421	5335	1	-	L/2	L/2	-
	5336	6000	1	1	L/3	L/3	L/3
12°	1601	2663	-	-	-	-	-
	2664	5851	1	-	L/2	L/2	-
	5852	6000	1	1	L/3	L/3	L/3

Supporting

无中间支撑 Without middle supporting (kN)	单中间支撑 Middle supporting (kN)	双中间支撑 Double middle supporting (kN)
$R1 = L \times q + M$	$R1 = La \times q + M$	$R1 = La \times q + M$
	$R2 = Lb \times q + N$	$R2 = Lb \times q + N$
$R2 = L \times q + N$	$R3 = (La + Lb) \times 1.3 \times q$	$R3 = (La + Lc) \times 1.3 \times q$
		$R4 = (Lb + Lc) \times 1.3 \times q$

踏板宽度 Pallets Width	800	1000
A	800	1000
B	1038	1238
C	1400	1600
D	1460	1660
E	2038	2238
F	1400	1600

Wholeheartedly, We Will Accompany You All The Time



Professional Team

SHANGHAI SIGMA ELEVATOR has a strong installation and after-sales maintenance team. Our skilled maintenance personnel are distributed in branches and sites across the country. Through continuous technical training, maintenance personnel can provide professional preventive measures for all its products. Maintenance and repair services.

Quick Response

Our professional maintenance technicians responded quickly and rushed to the scene as soon as possible to provide you with long-term solutions.

Custom Maintenance

As a service-oriented enterprise, SHANGHAI SIGMA ELEVATOR provides the most complete and flexible service. We will tailor the service solution according to your actual needs, and calculate the most economical and sound solution scientifically.



National Hotline

Open a 24-hour nationwide toll-free hotline, patiently solve any problems you have, and wholeheartedly escort you 24/7.
National Service Hotline: 800 820 1930 400 620 1930